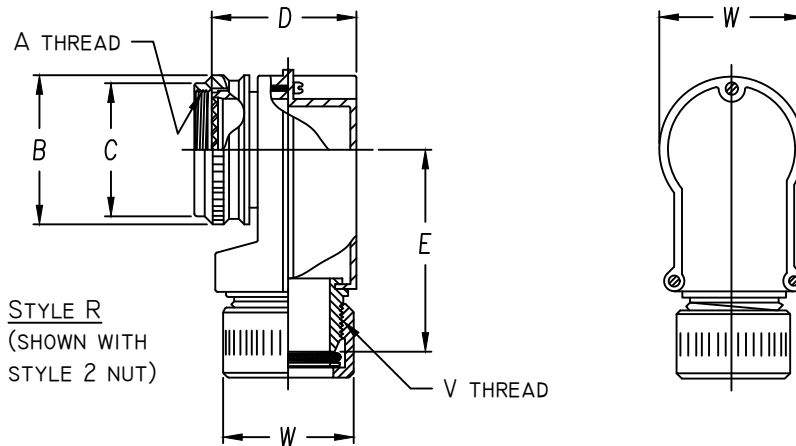




Table 2 - Cable Entry Data

ENTRY ORDER NUMBER	CABLE RANGE		V	W
	MAX	MIN	UNIFIED THD CLASS 2A	REF
04	.250	.125	.625 - 24	.844
06	.375	.219	.750 - 20	.984
08	.500	.344	.875 - 20	1.125
10	.625	.469	1.000 - 20	1.344
12	.750	.594	1.125 - 18	1.344
14	.875	.719	1.250 - 18	1.469

AVAILABLE FOR CONNECTOR CODES 40, 41, 47 & 54. CONSULT FACTORY FOR TABLE 1 DIMENSIONS ON OTHER CODES.



ASSEMBLY PART NUMBER

TO ESTABLISH YOUR P/N, USE THE FOLLOWING EXAMPLE

E 41 40 R 23 08 9 51

FUNCTION DESIGNATOR
 E - EMI ADAPTER

CONNECTOR CODE NUMBER - TABLE 1 (6)

SERIES PART NUMBER

ADAPTER STYLE
 R = 90° ADAPTER

ACCESSORY ORDER NUMBER - TABLE 1

MOD CODE (6)

PLATING CODE NUMBER - TABLE 4 (6)

CABLE STRAIN - TABLE V (8)

CABLE ENTRY ORDER NUMBER - TABLE 2

Table 1 - Order Number Data

Accessory Order Number By Connector Code & Shell Size

ORDER NUMBER	18	21	32	40	41	54		64	61	76	A	B	C	D	E	ORDER NUMBER
	④		②	③							UNIFIED THREAD	MAX DIA.	MAX DIA.	MAX DIM.	MAX DIM.	
01	8S (B)										.375-32	.750	.531			01
03	8S (A)										.438-27	.812	.594			03
04	8S (C)	8			8, 9					8	.438-28	.812	.594	.893	1.663	04
05						8 & 8S					.500-20	.875	.656			05
06	10S (-)								8, A		.500-28	.875	.656	1.462		06
07				9, A							M12 x 1.0	.719	.656	.893		07
08	10SL (C)	10			10, 11		3			10	.562-24	.844	.719			08
10	10SL(A,B), 12,12S(B,C)					10,10S,10SL		12			.625-24	1.000	.781	.893	1.663	10
11									10, B		.625-28	1.000	.781	1.462		11
12				11, B							M15 x 1.0	.844	.781	.893		12
13	12 & 12S (A)	12			12, 13					12	.688-24	1.062	.844	.893		13
15	14 & 14S (-)		12			12 & 12S	7	14			.750-20	1.125	.906	1.369	1.663	15
16				13, C							M18 x 1.0	.969	.906	.893		16
18		14			14, 15					14	.812-20	1.188	.969			18
19	16 & 16S (-)		14			14 & 14S	12	16			.875-20	1.250	1.031	.981	1.763	19
20									14, D		.875-28	1.250	1.031	1.577		20
21				15, D							M22 x 1.0	1.094	1.031	.981		21
23		16			16, 17					16	.938-20	1.312	1.094			23
24	18 (-)		16			16 & 16S	19	18			1.000-20	1.375	1.156	1.230	1.863	24
25									16, E		1.000-28	1.375	1.156	1.824		25
26				17, E							M25 x 1.0	1.219	1.156	1.230		26
28		18			18, 19	18	27			18	1.062-18	1.438	1.219			28
29	20 (-)		18					20			1.125-18	1.500	1.281	1.202	1.863	29
30	20 (R)										1.125-24	1.500	1.281			30
31									18, F		1.125-28	1.500	1.281	1.796		31
32				19, F							M28 x 1.0	1.344	1.281	1.202		32
34		20			20, 21	20	37			20	1.188-18	1.562	1.344	1.223		34
35	22 (-)		20					22			1.250-18	1.625	1.406			35
36									20, G		1.250-28	1.625	1.406	1.807	1.863	36
37				21, G							M31 x 1.0	1.469	1.406	1.223		37
39		22			22, 23	22				22	1.312-18	1.688	1.469			39
40	24 (-)		22					24			1.375-18	1.750	1.531	1.181	1.863	40
41									22, H		1.375-28	1.750	1.531	1.775		41
42				23, H							M34 x 1.0	1.594	1.531	1.181		42
44		24			24, 25	24				24	1.438-18	1.812	1.594	1.181	1.863	44
45							61				1.500-18	1.875	1.656			45
46									24, J		1.500-28	1.875	1.656	1.775		46
47				25, J							M37 x 1.0	1.719	1.656	1.181		47

NOTES: UNLESS OTHERWISE SPECIFIED.

- 1 THREADS ARE RIGHT HAND IN ACCORDANCE WITH FED-STD-H28, CLASS 2B.
- ② THREADS NOTED ARE LEFT HAND, CLASS 2B.
- ③ THREADS NOTED ARE ISO METRIC, CLASS 6H.
- ④ CODE 18 SHELL SIZES ARE FOLLOWED IN PARENTHESIS BY CONNECTOR MFR CODE. SEE CONNECTOR CODE 18 CHART AT RIGHT & EXAMPLE PART NUMBER FOR DETAILS.

- 5 TABLE 1 LISTS THE MOST USED CONNECTOR CODES. SEE SECTION 11 FOR OTHER CODES AVAILABLE AND COMPLETE CONNECTOR PART NUMBER CROSS REFERENCE.
- ⑥ SEE SUPPORT DATA SECTION FOR PLATING AND MODIFICATION CODE OPTIONS.
- ⑦ ADD .25 TO "D" & "F" FOR CONNECTOR CODES 30, 32 & 61.
- ⑧ SEE SUPPORT DATA SECTION FOR TABLE V & AVAILABLE STYLES

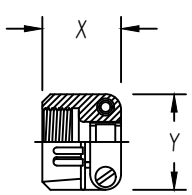
④ Connector Code 18 Chart

CONNECTOR CODE	CONNECTOR MANUFACTURER
	(MS3100, MS3101, MS3106 & MS3107)
A	AMPHENOL, CLASS A
B	BENDIX, CLASS A, E & R
C	CANNON, CLASS A, E & R
D	MFR. UNKNOWN, CLASS A, E & R
R	AMPHENOL, CLASS R
-	MFR. CODE NOT REQUIRED

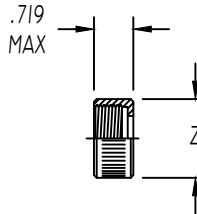


Table 2 - Environmental / Non-Environmental Cable Entry Data

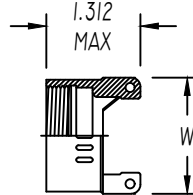
ENTRY ORDER NUMBER	ENVIRONMENTAL		NON ENVIRONMENTAL		V UNIFIED THREAD	R MAX DIM.	S MAX DIM.	T MAX DIM.	U MAX DIM.	W MAX DIM.	X MAX DIM.	Y MAX DIM.	Z MAX DIA.
	GLAND	RANGE	CABLE	RANGE									
	MAX	MIN	MAX	MIN									
△ 03	.250	.156	.250	.156	.500-28	N / A	.812	1.375	.812	N / A	.844	.781	.656
04	.312	.188	.312	.188	.625-24	1.031	.937	1.375	.937	.875	.844	.906	.781
06	.438	.281	.438	.281	.750-20	1.031	1.062	1.375	1.062	1.000	.906	1.094	.906
08	.562	.375	.562	.344	.875-20	1.031	1.188	1.375	1.188	1.125	.969	1.188	1.031
10	.625	.500	.625	.375	1.000-20	1.094	1.312	1.437	1.312	1.250	.969	1.281	1.156
12	.750	.500	.750	.438	1.188-18	1.219	1.562	1.437	1.562	1.375	.969	1.500	1.344
△ 14	.875	.750	.875	.719	1.250-18	N / A	N / A	N / A	N / A	1.500	N / A	N / A	N / A
16	1.000	.844	1.000	.781	1.438-18	1.219	1.750	1.562	1.750	1.625	1.062	1.719	1.594
20	1.250	.938	1.250	.750	1.750-18	1.344	2.250	1.812	2.250	1.750	1.125	2.062	1.906
24	1.375	1.000	1.375	.781	2.000-18	N / A	2.375	2.062	2.375	N / A	1.188	2.312	2.156
28	1.625	1.250	1.625	.969	2.250-16	N / A	2.625	2.062	2.625	N / A	1.719	2.719	2.406
32	1.875	1.500	1.875	1.125	2.500-16	N / A	2.812	2.188	2.812	N / A	1.781	2.969	2.656



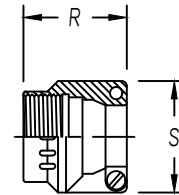
STYLE 1 △
 AS85049/41A CLAMP
 (MS 3057**A)



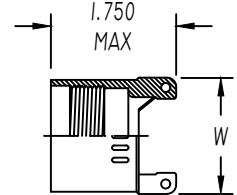
STYLE 2 △
 NUT



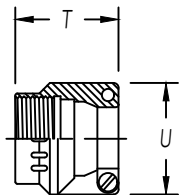
STYLE 3 △
 NON-ENVIRONMENTAL



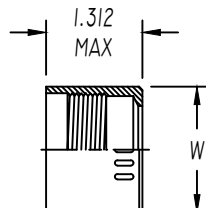
STYLE 3 △
 NUT ENVIRONMENTAL
 (AS85049/1)
 (MS 3057-**B)



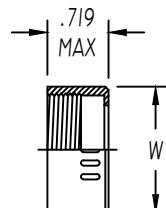
STYLE 3 △
 ENVIRONMENTAL



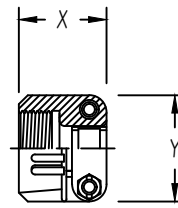
STYLE 4 △
 STRAIN RELIEF ENVIRONMENTAL
 (AS85049/2)
 (MS 3057-**C)



STYLE 4 △
 ENVIRONMENTAL



STYLE 4 △
 NON-ENVIRONMENTAL



STYLE 9 △
 STRAIN-RELIEF CLAMP WITH TELESCOPING SCREWS

NOTES: UNLESS OTHERWISE SPECIFIED

△ AVAILABLE ONLY ON: A**01, A**30, E**01, E**03, E**04, E**05, E**07, E**21, E**30, & E**33

△ AVAILABLE ONLY ON: E**15, E**17, E**38, E**40, & E**41

3. CONSULT FACTORY FOR SIZES AND INFORMATION NOT LISTED