



ELECTRO ADAPTER INC.
 CHATSWORTH, CALIFORNIA, USA 91311
 PHONE : (818) 998-1198
 FAX : (818) 709-5773

**SECTION 1 - MECHANICAL
 STRAIN RELIEF, EMI / RFI,
 ENCLOSED RINGS, ENVIRONMENTAL
 SAE AS85049 CATEGORY 1**

E * * 04

SHEET 1 OF 2

Add'l Finish Options **TABLE V** [Click Here](#)

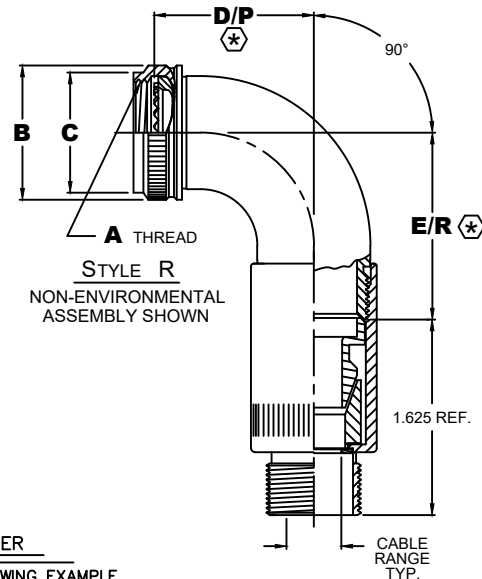
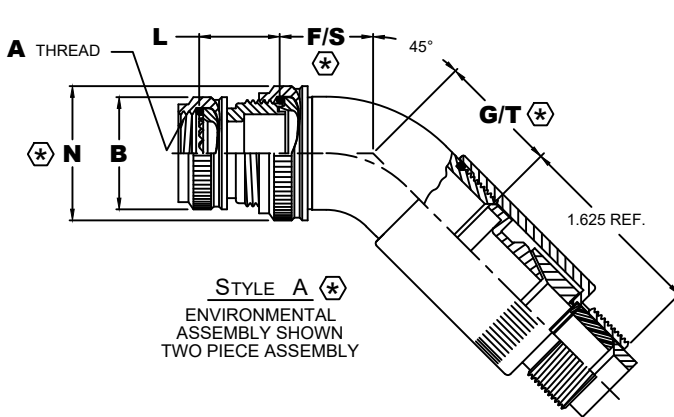
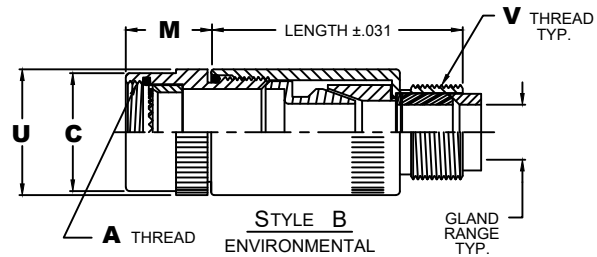
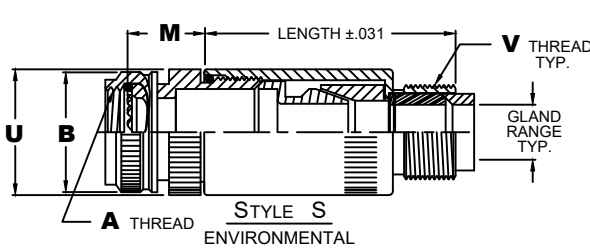
Table 2 - Environmental / Non-Environmental Cable Entry Data

ENTRY ORDER NUMBER	ENVIRONMENTAL GLAND RANGE		NON ENVIRONMENTAL CABLE RANGE		N MAX DIA.	P MAX DIM.	R MAX DIM.	S MAX DIM.	T MAX DIM.	U ±.031 DIA.	V UNIFIED THREAD
	MAX	MIN	MAX	MIN							
03	.250	.156	.250	.156	N/A	1.156	1.344	.875	.938	.750	.500-28
04	.312	.188	.312	.188	.734	1.219	1.406	.906	.969	.875	.625-24
06	.438	.281	.438	.281	.858	1.406	1.531	.969	1.031	1.000	.750-20
08	.562	.375	.562	.344	.984	1.531	1.656	1.031	1.094	1.125	.875-20
10	.625	.500	.625	.375	1.112	1.656	1.781	1.094	1.125	1.125	1.000-20
12	.750	.500	.750	.438	1.345	1.906	2.031	1.188	1.250	1.250	1.188-18
16	.938	.625	.938	.562	1.594	2.156	2.281	1.281	1.344	1.500	1.438-18
20	1.250	.938	1.250	.750	1.968	2.406	2.469	1.375	1.469	1.875	1.750-18
24	1.375	1.000	1.375	.781	2.219	2.656	2.719	1.500	1.594	2.125	2.000-18
28	1.625	1.250	1.625	.969	2.469	2.906	2.969	1.594	1.656	2.375	2.250-16
32	1.875	1.500	1.875	1.125	2.719	3.156	3.219	1.719	1.750	2.625	2.500-16

Table 3

CONN CODE NUMBER	L MAX DIM.	M MAX DIM.
18	.875	1.500
19	.875	1.500
21	.875	1.125
30	1.032	.750
32	1.094	1.500
40	.750	.750
41	.750	.750
47	.750	.750
51	.875	.750
54	.750	1.250
61	1.094	1.000
76	.750	1.125

(*) DIMENSIONS D, E, F & G APPLY FOR ONE PIECE ASSEMBLY AS SHOWN IN STYLE R. DIMENSIONS N, P, R, S & T APPLY FOR TWO PIECE ASSEMBLY AS SHOWN IN STYLE A, WHEN CABLE ENTRY EXCEEDS CONNECTOR I.D.



ASSEMBLY PART NUMBER
 TO ESTABLISH YOU P/N, USE THE FOLLOWING EXAMPLE

E 41 04 S 23 08 9 B 08 51

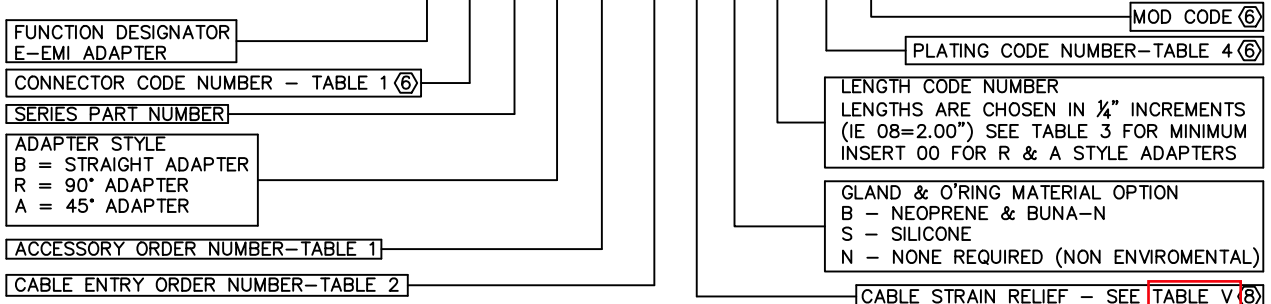


Table 1 - Order Number Data

E * * 04
SHEET 2 OF 2

Accessory Order Number By Connector Code & Shell Size

ORDER NUMBER	Connector Code													ORDER NUMBER			
	18	21	32	40	41	54	64	61	76	A	B	C	D		E	F	G
	4		2	3						UNIFIED THREAD	MAX DIA.	MAX DIA.	±.125 DIM.	MAX DIM.	±.125 DIM.	MAX DIM.	
01	8S (B)									.375-32	.750	.531					01
03	8S (A)									.438-27	.812	.594					03
04	8S (C)	8			8, 9			8		.438-28	.812	.594	1.125	1.188	.812	.875	04
05						8 & 8S				.500-20	.875	.656					05
06	10S (-)							8, A		.500-28	.875	.656					06
07				9, A						M12 x 1.0	.719	.656					07
08	10SL (C)	10			10, 11		3		10	.562-24	.844	.719					08
10	10SL(A,B), 12,12S(B,C)					10,10S,10SL		12		.625-24	1.000	.781	1.250	1.312	.875	.938	10
11								10, B		.625-28	1.000	.781					11
12				11, B						M15 x 1.0	.844	.781					12
13	12 & 12S (A)	12			12, 13				12	.688-24	1.062	.844	1.375	1.438	.938	1.000	13
15	14 & 14S (-)		12			12 & 12S	7	14		.750-20	1.125	.906					15
16				13, C						M18 x 1.0	.969	.906					16
18		14			14, 15				14	.812-20	1.188	.969	1.500	1.562	1.000	1.062	18
19	16 & 16S (-)		14			14 & 14S	12	16		.875-20	1.250	1.031					19
20									14, D	.875-28	1.250	1.031					20
21				15, D						M22 x 1.0	1.094	1.031					21
23		16			16, 17				16	.938-20	1.312	1.094	1.625	1.688	1.062	1.125	23
24	18 (-)		16			16 & 16S	19	18		1.000-20	1.375	1.156					24
25								16, E		1.000-28	1.375	1.156					25
26				17, E						M25 x 1.0	1.219	1.156					26
28		18			18, 19	18	27		18	1.062-18	1.438	1.219	1.875	1.938	1.156	1.219	28
29	20 (-)		18					20		1.125-18	1.500	1.281					29
30	20 (R)									1.125-24	1.500	1.281	1.750	1.812	1.094	1.156	30
31								18, F		1.125-28	1.500	1.281					31
32				19, F						M28 x 1.0	1.344	1.281					32
34		20			20, 21	20	37		20	1.188-18	1.562	1.344	1.875	1.938	1.156	1.219	34
35	22 (-)		20					22		1.250-18	1.625	1.406					35
36								20, G		1.250-28	1.625	1.406					36
37				21, G						M31 x 1.0	1.469	1.406					37
39		22			22, 23	22			22	1.312-18	1.688	1.469	2.000	2.062	1.188	1.250	39
40	24 (-)		22					24		1.375-18	1.750	1.531					40
41								22, H		1.375-28	1.750	1.531					41
42				23, H						M34 x 1.0	1.594	1.531					42
44		24			24, 25	24			24	1.438-18	1.812	1.594	2.125	2.188	1.250	1.312	44
45							61			1.500-18	1.875	1.656					45
46								24, J		1.500-28	1.875	1.656					46
47				25, J						M37 x 1.0	1.719	1.656					47
48										1.562-18	1.938	1.719	2.375	2.625	1.344	1.625	48
49	28 (-)		24					28		1.625-18	2.000	1.781					49
51						28				1.750-18	2.125	1.906					51
52	32 (B,C)		28					32		1.875-16	2.250	2.031	2.625	3.000	1.438	1.812	52
53	32 (A,R)									1.906-18	2.281	2.062					53
54						32				2.000-18	2.375	2.156					54
55	36 (B)		32					36		2.062-16	2.469	2.219					55
56	36 (R)									2.062-24	2.469	2.219					56
57	36 (C)									2.125-16	2.500	2.281	2.875	3.250	1.562	1.938	57
58	36 (A)									2.125-18	2.500	2.281					58
59						36				2.250-16	2.625	2.406					59
60	40 (B)		36					40		2.312-16	2.719	2.469	3.125	3.500	1.688	2.062	60
61	40 (A,C)									2.375-16	2.750	2.531					61
62						40				2.500-16	2.875	2.656					62

NOTES: UNLESS OTHERWISE SPECIFIED.

- 1 THREADS ARE RIGHT HAND IN ACCORDANCE WITH FED-STD-H28, CLASS 2B.
- 2 THREADS NOTED ARE LEFT HAND, CLASS 2B.
- 3 THREADS NOTED ARE ISO METRIC, CLASS 6H.
- 4 CODE 18 SHELL SIZES ARE FOLLOWED IN PARENTHESIS BY CONNECTOR MFR CODE. SEE CONNECTOR CODE 18 CHART AT RIGHT & EXAMPLE PART NUMBER FOR DETAILS.

- 5 TABLE 1 LISTS THE MOST USED CONNECTOR CODES. SEE SECTION 11 FOR OTHER CODES AVAILABLE AND COMPLETE CONNECTOR PART NUMBER CROSS REFERENCE.
- 6 SEE SUPPORT DATA SECTION FOR PLATING AND MODIFICATION CODE OPTIONS.
- 7 ADD .25 TO "D" & "F" FOR CONNECTOR CODES 30, 32 & 61.
- 8 SEE SUPPORT DATA SECTION FOR TABLE V & AVAILABLE STYLES

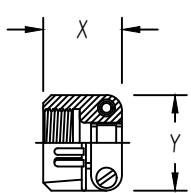
Connector Code 18 Chart

CONNECTOR CODE	CONNECTOR MANUFACTURER
	(MS3100, MS3101, MS3106 & MS3107)
A	AMPHENOL, CLASS A
B	BENDIX, CLASS A, E & R
C	CANNON, CLASS A, E & R
D	MFR. UNKNOWN, CLASS A, E & R
R	AMPHENOL, CLASS R
-	MFR. CODE NOT REQUIRED

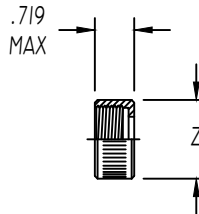


Table 2 - Environmental / Non-Environmental Cable Entry Data

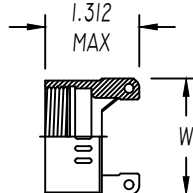
ENTRY ORDER NUMBER	ENVIRONMENTAL		NON ENVIRONMENTAL		V UNIFIED THREAD	R MAX DIM.	S MAX DIM.	T MAX DIM.	U MAX DIM.	W MAX DIM.	X MAX DIM.	Y MAX DIM.	Z MAX DIA.
	GLAND RANGE		CABLE RANGE										
	MAX	MIN	MAX	MIN									
△ 03	.250	.156	.250	.156	.500-28	N / A	.812	1.375	.812	N / A	.844	.781	.656
04	.312	.188	.312	.188	.625-24	1.031	.937	1.375	.937	.875	.844	.906	.781
06	.438	.281	.438	.281	.750-20	1.031	1.062	1.375	1.062	1.000	.906	1.094	.906
08	.562	.375	.562	.344	.875-20	1.031	1.188	1.375	1.188	1.125	.969	1.188	1.031
10	.625	.500	.625	.375	1.000-20	1.094	1.312	1.437	1.312	1.250	.969	1.281	1.156
12	.750	.500	.750	.438	1.188-18	1.219	1.562	1.437	1.562	1.375	.969	1.500	1.344
△ 14	.875	.750	.875	.719	1.250-18	N / A	N / A	N / A	N / A	1.500	N / A	N / A	N / A
16	1.000	.844	1.000	.781	1.438-18	1.219	1.750	1.562	1.750	1.625	1.062	1.719	1.594
20	1.250	.938	1.250	.750	1.750-18	1.344	2.250	1.812	2.250	1.750	1.125	2.062	1.906
24	1.375	1.000	1.375	.781	2.000-18	N / A	2.375	2.062	2.375	N / A	1.188	2.312	2.156
28	1.625	1.250	1.625	.969	2.250-16	N / A	2.625	2.062	2.625	N / A	1.719	2.719	2.406
32	1.875	1.500	1.875	1.125	2.500-16	N / A	2.812	2.188	2.812	N / A	1.781	2.969	2.656



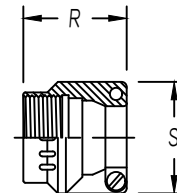
STYLE 1 △
 AS85049/41A CLAMP
 (MS 3057**A)



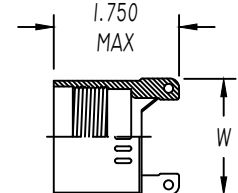
STYLE 2 △
 NUT



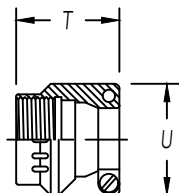
STYLE 3 △
 NON-ENVIRONMENTAL



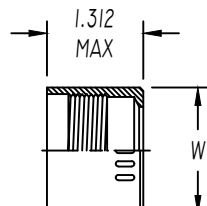
STYLE 3 △
 NUT
 ENVIRONMENTAL
 (AS85049/1)
 (MS 3057-**B)



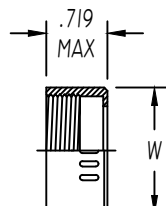
STYLE 3 △
 ENVIRONMENTAL



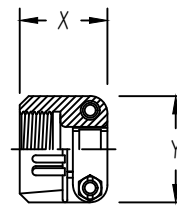
STYLE 4 △
 STRAIN RELIEF
 ENVIRONMENTAL
 (AS85049/2)
 (MS 3057-**C)



STYLE 4 △
 ENVIRONMENTAL



STYLE 4 △
 NON-ENVIRONMENTAL



STYLE 9 △
 STRAIN-RELIEF CLAMP
 WITH TELESCOPING SCREWS

NOTES: UNLESS OTHERWISE SPECIFIED

△1 AVAILABLE ONLY ON: A**01, A**30, E**01, E**03, E**04, E**05, E**07, E**21, E**30, & E**33

△2 AVAILABLE ONLY ON: E**15, E**17, E**38, E**40, & E**41

3. CONSULT FACTORY FOR SIZES AND INFORMATION NOT LISTED