



Table 2 - Cable Entry Data

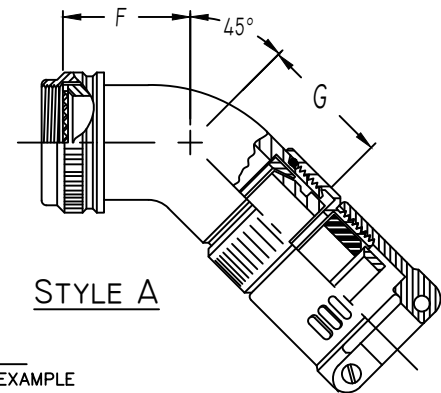
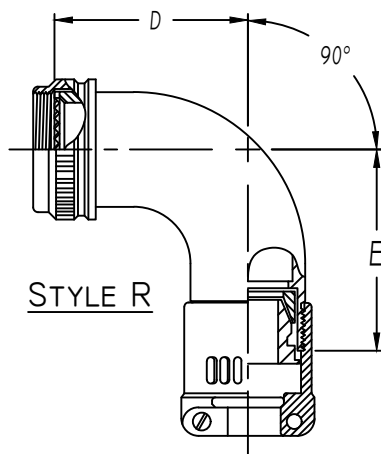
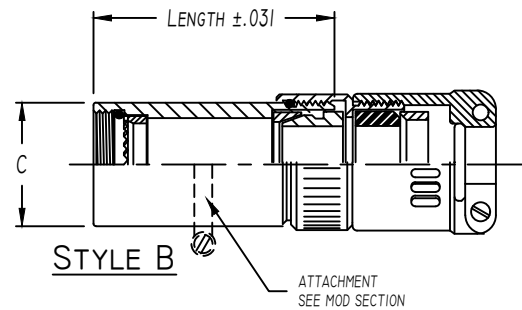
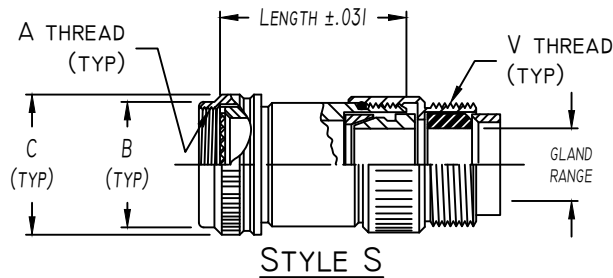
ENTRY ORDER NUMBER	ENVIRONMENTAL GLAND RANGE		NON ENVIRONMENTAL CABLE RANGE		V UNIFIED THREAD
	MAX	MIN	MAX	MIN	
03	.250	.156	.250	.156	.500-28
04	.312	.188	.312	.188	.625-24
06	.438	.281	.438	.281	.750-20
08	.562	.375	.562	.344	.875-20
10	.625	.500	.625	.375	1.000-20
12	.750	.500	.750	.438	1.188-18
16	.938	.625	.938	.562	1.438-18
20	1.250	.938	1.250	.750	1.750-18
24	1.375	1.000	1.375	.781	2.000-18
28	1.625	1.250	1.625	.969	2.250-16
32	1.875	1.500	1.875	1.125	2.500-16

WHEN MAXIMUM CABLE ENTRY EXCEEDS THE CONNECTOR INTERFACE DIAMETER, A 2 PIECE ADAPTER WILL BE SUPPLIED.

Table 3 - Length Code Data

CONN CODE NUMBER	MIN ORDER LENGTH	MIN LENGTH CODE
40	1.250	05
41	1.250	05
54	1.250	05

OTHER CONNECTOR CODES AVAILABLE
 CONTACT ENGINEERING FOR DETAILS



ASSEMBLY PART NUMBER

TO ESTABLISH YOUR P/N, USE THE FOLLOWING EXAMPLE

E 41 01 S 23 08 9 B 06 51

FUNCTION DESIGNATOR
 E-EMI ADAPTER

CONNECTOR CODE NUMBER - TABLE 1 (6)

SERIES PART NUMBER

ADAPTER STYLE
 S = STRAIGHT SPIN COUPLING ADAPTER
 B = STRAIGHT BASIC ADAPTER
 R = 90° ADAPTER
 A = 45° ADAPTER

ACCESSORY ORDER NUMBER-TABLE 1

MOD CODE (6)

PLATING CODE NUMBER-TABLE 4 (6)

LENGTH CODE NUMBER
 LENGTHS ARE CHOSEN IN 1/4" INCREMENTS
 (IE 08=2.00") SEE TABLE 3 FOR MINIMUM
 INSERT 00 FOR R & A STYLE ADAPTERS

GLAND & O'RING MATERIAL OPTION
 B - NEOPRENE & BUNA-N
 S - SILICONE
 N - NONE REQUIRED (NON ENVIROMENTAL)

CABLE STRAIN RELIEF - SEE TABLE V (8)

CABLE ENTRY ORDER NUMBER-TABLE 2

Table 1 - Order Number Data

Accessory Order Number By Connector Code & Shell Size

ORDER NUMBER	CONNECTOR CODE			A UNIFIED THREAD	B MAX DIA.	C MAX DIA.	D REF DIM.	E REF DIM.	F REF DIM.	G REF DIM.	ORDER NUMBER
	40 ③	41	54								
01				.375-32	.750	.531					01
03				.438-27	.812	.594					03
04		8, 9		.438-28	.812	.594	1.125	1.188	.812	.875	04
05			8 & 8S	.500-20	.875	.656					05
06				.500-28	.875	.656					06
07	9, A			M12 x 1.0	.719	.656					07
08		10, 11		.562-24	.844	.719					08
10			10,10S,10SL	.625-24	1.000	.781	1.250	1.312	.875	.938	10
11				.625-28	1.000	.781					11
12	11, B			M15 x 1.0	.844	.781					12
13		12, 13		.688-24	1.062	.844					13
15			12 & 12S	.750-20	1.125	.906	1.375	1.438	.938	1.000	15
16	13, C			M18 x 1.0	.969	.906					16
18		14, 15		.812-20	1.188	.969					18
19			14 & 14S	.875-20	1.250	1.031	1.500	1.562	1.000	1.062	19
20				.875-28	1.250	1.031					20
21	15, D			M22 x 1.0	1.094	1.031					21
23		16, 17		.938-20	1.312	1.094					23
24			16 & 16S	1.000-20	1.375	1.156	1.625	1.688	1.062	1.125	24
25				1.000-28	1.375	1.156					25
26	17, E			M25 x 1.0	1.219	1.156					26
28		18, 19	18	1.062-18	1.438	1.219					28
29				1.125-18	1.500	1.281					29
30				1.125-24	1.500	1.281	1.750	1.812	1.094	1.156	30
31				1.125-28	1.500	1.281					31
32	19, F			M28 x 1.0	1.344	1.281					32
34		20, 21	20	1.188-18	1.562	1.344					34
35				1.250-18	1.625	1.406	1.875	1.938	1.156	1.219	35
36				1.250-28	1.625	1.406					36
37	21, G			M31 x 1.0	1.469	1.406					37
39		22, 23	22	1.312-18	1.688	1.469					39
40				1.375-18	1.750	1.531	2.000	2.062	1.188	1.250	40
41				1.375-28	1.750	1.531					41
42	23, H			M34 x 1.0	1.594	1.531					42
44		24, 25	24	1.438-18	1.812	1.594					44
45				1.500-18	1.875	1.656					45
46				1.500-28	1.875	1.656	2.125	2.188	1.250	1.312	46
47	25, J			M37 x 1.0	1.719	1.656					47
48				1.562-18	1.938	1.719					48
49				1.625-18	2.000	1.781	2.375	2.625	1.344	1.625	49
51			28	1.750-18	2.125	1.906					51
52				1.875-16	2.250	2.031					52
53				1.906-18	2.281	2.062	2.625	3.000	1.438	1.812	53
54			32	2.000-18	2.375	2.156					54
55				2.062-16	2.469	2.219					55
56				2.062-24	2.469	2.219					56
57				2.125-16	2.500	2.281	2.875	3.250	1.562	1.938	57
58				2.125-18	2.500	2.281					58
59			36	2.250-16	2.625	2.406					59
60				2.312-16	2.719	2.469					60
61				2.375-16	2.750	2.531	3.125	3.500	1.688	2.062	61
62			40	2.500-16	2.875	2.656					62

NOTES: UNLESS OTHERWISE SPECIFIED.

1 THREADS ARE RIGHT HAND IN ACCORDANCE WITH FED-STD-H28, CLASS 2B.

③ THREADS NOTED ARE ISO METRIC, CLASS 6H.

5 TABLE 1 LISTS THE MOST USED CONNECTOR CODES. SEE SECTION 11 FOR OTHER CODES AVAILABLE AND COMPLETE CONNECTOR PART NUMBER CROSS REFERENCE.

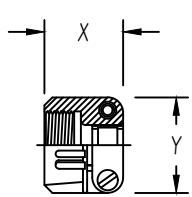
⑥ SEE SUPPORT DATA SECTION FOR PLATING AND MODIFICATION CODE OPTIONS.

⑧ SEE SUPPORT DATA SECTION FOR TABLE V & AVAILABLE STYLES

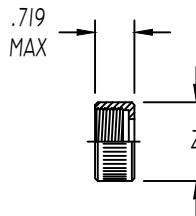


Table 2 - Environmental / Non-Environmental Cable Entry Data

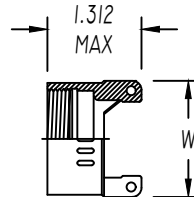
ENTRY ORDER NUMBER	ENVIRONMENTAL		NON ENVIRONMENTAL		V UNIFIED THREAD	R MAX DIM.	S MAX DIM.	T MAX DIM.	U MAX DIM.	W MAX DIM.	X MAX DIM.	Y MAX DIM.	Z MAX DIA.
	GLAND RANGE		CABLE RANGE										
	MAX	MIN	MAX	MIN									
03	.250	.156	.250	.156	.500-28	N / A	.812	1.375	.812	N / A	.844	.781	.656
04	.312	.188	.312	.188	.625-24	1.031	.937	1.375	.937	.875	.844	.906	.781
06	.438	.281	.438	.281	.750-20	1.031	1.062	1.375	1.062	1.000	.906	1.094	.906
08	.562	.375	.562	.344	.875-20	1.031	1.188	1.375	1.188	1.125	.969	1.188	1.031
10	.625	.500	.625	.375	1.000-20	1.094	1.312	1.437	1.312	1.250	.969	1.281	1.156
12	.750	.500	.750	.438	1.188-18	1.219	1.562	1.437	1.562	1.375	.969	1.500	1.344
14	.875	.750	.875	.719	1.250-18	N / A	N / A	N / A	N / A	1.500	N / A	N / A	N / A
16	1.000	.844	1.000	.781	1.438-18	1.219	1.750	1.562	1.750	1.625	1.062	1.719	1.594
20	1.250	.938	1.250	.750	1.750-18	1.344	2.250	1.812	2.250	1.750	1.125	2.062	1.906
24	1.375	1.000	1.375	.781	2.000-18	N / A	2.375	2.062	2.375	N / A	1.188	2.312	2.156
28	1.625	1.250	1.625	.969	2.250-16	N / A	2.625	2.062	2.625	N / A	1.719	2.719	2.406
32	1.875	1.500	1.875	1.125	2.500-16	N / A	2.812	2.188	2.812	N / A	1.781	2.969	2.656



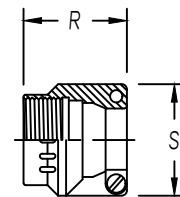
STYLE 1
 AS85049/41A CLAMP
 (MS 3057**A)



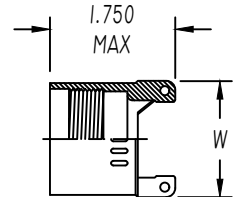
STYLE 2
 NUT



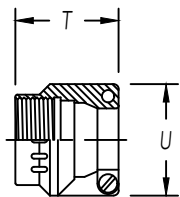
STYLE 3
 NON-ENVIRONMENTAL



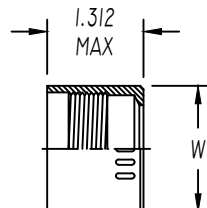
STYLE 3
 NUT ENVIRONMENTAL
 (AS85049/1)
 (MS 3057.**B)



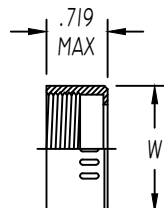
STYLE 3
 ENVIRONMENTAL



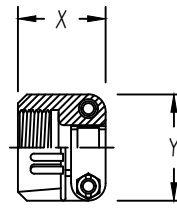
STYLE 4
 STRAIN RELIEF ENVIRONMENTAL
 (AS85049/2)
 (MS 3057.**C)



STYLE 4
 ENVIRONMENTAL



STYLE 4
 NON-ENVIRONMENTAL



STYLE 9
 STRAIN-RELIEF CLAMP WITH TELESCOPING SCREWS

NOTES: UNLESS OTHERWISE SPECIFIED

AVAILABLE ONLY ON: A**01, A**30, E**01, E**03, E**04, E**05, E**07, E**21, E**30, & E**33

AVAILABLE ONLY ON: E**15, E**17, E**38, E**40, & E**41

3. CONSULT FACTORY FOR SIZES AND INFORMATION NOT LISTED