

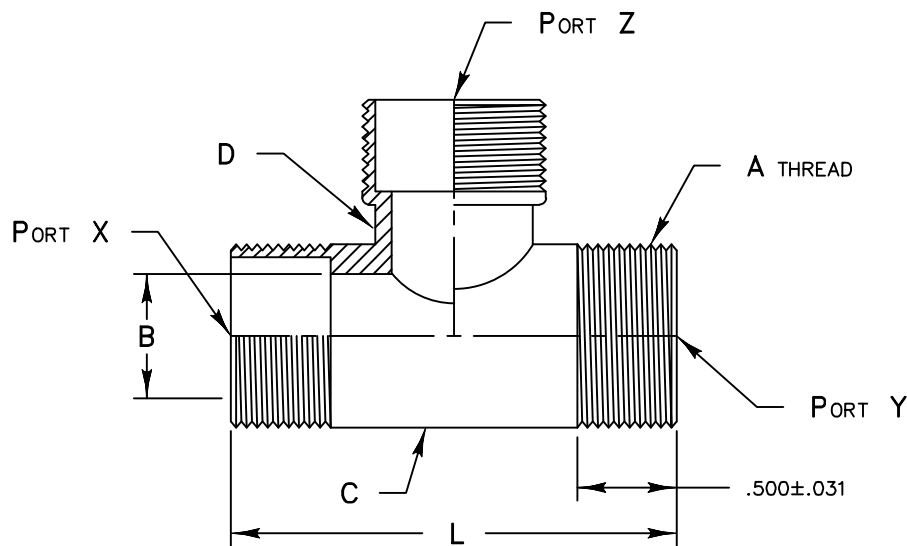


ELECTRO ADAPTER, INC.
 CHATSWORTH, CALIFORNIA, USA 91311
 PHONE: (818) 998-1198
 FAX: (818) 709-5773
 WEB SITE: www.electro-adapter.com

**TRANSITION, CONDUIT
 90° TRIPLE ENTRY**

**SPECIFICATION CONTROL DRAWING
 EA92**

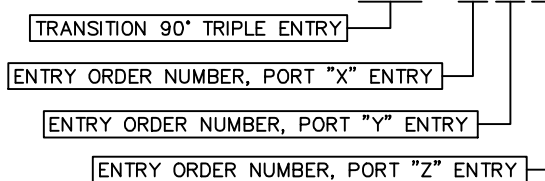
ENTRY ORDER NUMBER	CLAMP RANGE		A R.H. THREAD CLASS 2A	~oB	~oC	~oD	(L) LENGTH
	MAX	MIN		MIN	±.031	±.031	
0 3	.250	.156	.500-28UNEF	.280	.500	.438	1.750
0 4	.312	.188	.625-24UNEF	.342	.625	.500	1.875
0 6	.438	.281	.750-20UNEF	.462	.750	.625	2.000
0 8	.562	.344	.875-20UNEF	.592	.875	.750	2.125
1 0	.625	.375	1.000-20UNEF	.655	1.000	.875	2.250
1 2	.750	.438	1.188-18UNEF	.780	1.188	1.000	2.438
1 6	.938	.562	1.438-18UNEF	.970	1.438	1.188	2.688



PORT X &/OR PORT Y MUST BE THE SAME SIZE OR LARGER THAT PORT Z

ASSEMBLY PART NUMBER
 TO ESTABLISH YOUR PART NUMBER,
 USE THE FOLLOWING EXAMPLE

EA92-1612120-003



PLATING CODE NUMBER:
 03 = CADMIUM, OLIVE DRAB, PER QQ-P-416, TYPE II, CL 3
 55 = CADMIUM, OLIVE DRAB, PER QQ-P-416, TYPE II, CL 3 OVER ELECTROLESS NICKEL PER MIL-C-26074, CL 3 OR 4, GRADE B.
 FOR ADDITIONAL FINISH OPTIONS, SEE CATALOG TABLE 4.