

PART NO.			
902-270			
REVISIONS			
LTR	ECO NO.	DRAWN	APPR.
A	22553	SJDC 10-30-15	GF 10-30-15
B	22804	RSF 09/25/19	GF 09/26/19

Example Part Number

902-2703155*C

Add'l Finish Options TABLE 4 Click Here

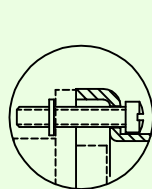
BASIC ADAPTER NO.

ADD 'C' FOR ADAPTER SUPPLIED WITH SCREW RETENTION CLIPS, OMIT IF NOT REQUIRED.

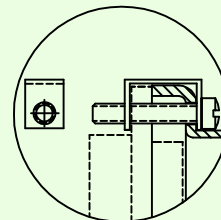
CONNECTOR ORDER NUMBER							
SHELL SIZE	A	B	C	D	F	Y	Z
	±.010	±.010	±.020	±.020	UNIFIED THD	MAX	MAX
0 9	.779	.360	.565	.750	2-56UNC-2A	.281	.312
1 5	.925	.360	.715	.880	2-56UNC-2A	.281	.420
2 1	1.075	.360	.865	1.000	2-56UNC-2A	.281	.591
2 5	1.175	.360	.965	1.060	2-56UNC-2A	.281	.690
3 1	1.325	.360	1.115	1.120	2-56UNC-2A	.281	.820
3 7	1.475	.360	1.265	1.160	2-56UNC-2A	.281	.970
5 1	1.425	.400	1.215	1.190	2-56UNC-2A	.312	.920
5 1-2	1.825	.360	1.615	1.190	2-56UNC-2A	.312	.920
1 0 0	2.160	.450	1.800	1.250	4-40UNC-2A	.360	1.290

PLATING CODE NUMBER
 CODE 55 - CADMIUM PER SAE AMS-QQ-P-416, TYPE II, CLASS 3, OVER ELECTROLESS NICKEL PER AMS-C-26074 CLASS 3 OR 4, GRADE B.
 CODE 56 - ELECTROLESS NICKEL, PER SAE-AMS-2404F, WITH IRIDITE CONVERSION
 FOR ADDITIONAL FINISH OPTIONS, SEE CATALOG TABLE 4.

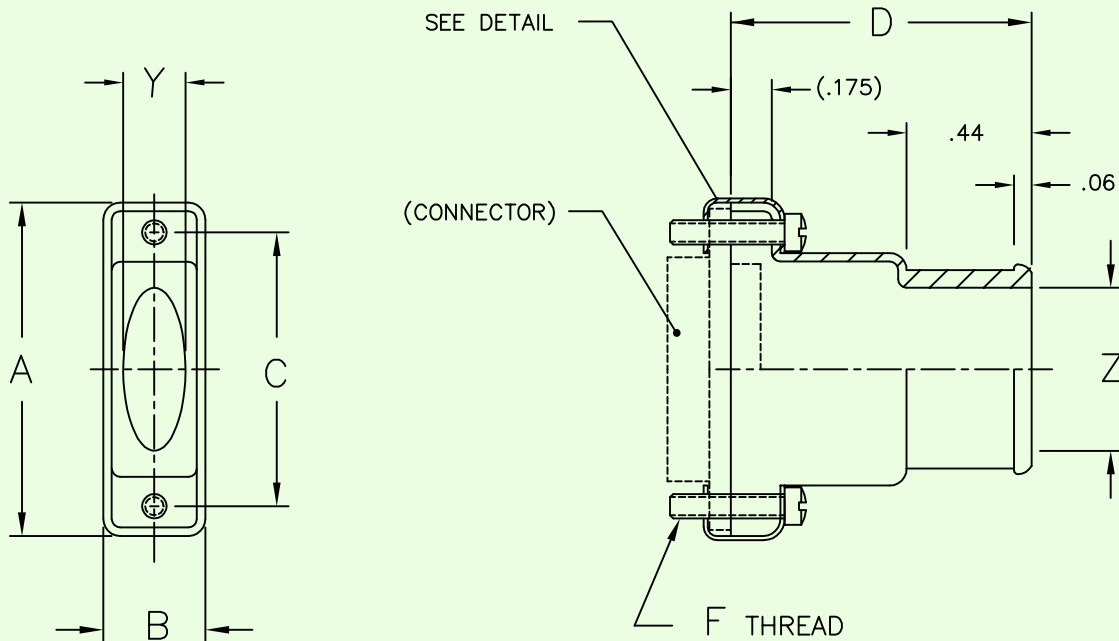
JACKSCREW TYPE
 F = 2 MALE FILLISTER
 H = 2 MALE HEX SOCKET
 J = 2 FEMALE JACKPOST
 OMIT IF JACKSCREWS NOT REQUIRED



NYLON WASHER
 SEE PART NUMBER



RETENTION CLIP
 SEE PART NUMBER



NOTES: UNLESS OTHERWISE SPECIFIED.

- ASSEMBLY IDENTIFICATION PER MIL-STD-1285.
- MATERIAL: ADAPTER - ALUMINUM ALLOY.
HARDWARE - SST.

SCREWS ARE CAPTIVATED WITH NYLON WASHERS STANDARD, NOT SUPPLIED WITH 'C' OPTION.

The information disclosed herein is the property of, and a proprietary item originated by ELECTRO ADAPTER, INC., who reserves all patent, proprietary design, use, sale, manufacturing and reproduction rights thereon; except for uses expressly granted to the United States Government and items which are vendor parts, disclosure shall not be made without written consent from ELECTRO ADAPTER, INC.

UNLESS OTHERWISE SPECIFIED DIMENSIONS ARE IN INCHES

TOLERANCES: ANGLES DECIMALS
 ± 2° .XX = ± .06
 .XXX = ± .031

DO NOT SCALE DRAWING

DRAWN	DATE
SJDC	4-13-10
CHKD	DATE
APVD	DATE
GF	4-15-10
GF	4-15-10
RELEASED	DATE

ELECTRO ADAPTER, INC. CHATSWORTH, CA. 91311-6189			
DRAWING TITLE			
BACKSHELL, EMI/RFI, STRAIGHT, FOR MIL-DTL-83513/1, /2, /3 & /4 CLASS M, MICRO-D, SHIELD TERMINATION			
SIZE	CAGE CODE	DRAWING NUMBER	REV.
A	31461	902-270	B
SCALE: NONE	/0/SALES/902/270	SHEET 1 OF 1	