

Example Part Number

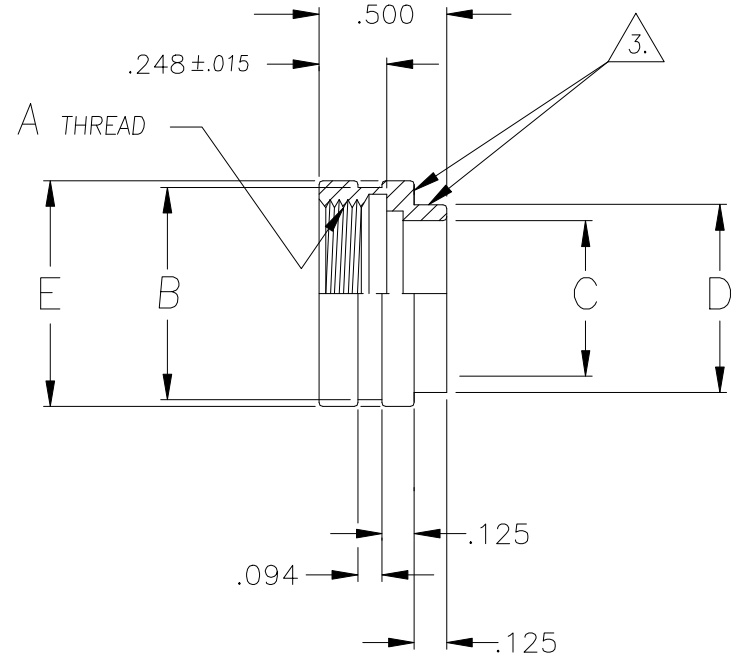
902-16540-16

BASIC PART NUMBER

CONNECTOR CODE

ORDER NUMBER	SHELL SIZE		A METRIC THD. CLASS 6H	ØB ±.010	ØC ±.015	ØD ±.015	ØE ±.010
	COM'L	MIL					
0 8	9	A	M12 X 1.0	.625	.312	.438	.688
1 0	11	B	M15 X 1.0	.750	.438	.562	.812
1 2	13	C	M18 X 1.0	.875	.562	.688	.938
1 4	15	D	M22 X 1.0	1.000	.688	.812	1.062
1 6	17	E	M25 X 1.0	1.125	.812	.938	1.188
1 8	19	F	M28 X 1.0	1.250	.938	1.062	1.312
2 0	21	G	M31 X 1.0	1.375	1.062	1.188	1.438
2 2	23	H	M34 X 1.0	1.500	1.188	1.312	1.562
2 4	25	J	M37 X 1.0	1.625	1.312	1.438	1.688

PART NUMBER			
902-16540			
REVISIONS			
LTR	ECO NUMBER	DRAWN	APPROVED
A	20991	C.F. 07-22-05	G.F. 07-22-05




NOTES: UNLESS OTHERWISE SPECIFIED

1. ASSEMBLY IDENTIFICATION PER MIL-STD-1285.

2. MATERIAL: ALUMINUM ALLOY

3. PLATING: CADMIUM, OLIVE DRAB OVER ELECTROLESS NICKEL, PER QQ-P-416 & MIL-C-26074. (SURFACES INDICATED TO BE NICKEL PLATED ONLY)

The information disclosed herein is the property of, and a proprietary item originated by ELECTRO ADAPTER, INC. who reserves all patent, proprietary design, use, sale, manufacturing and reproduction rights thereto; except for uses expressly granted to the United States Government and items which are vendor parts, disclosure shall not be made without written consent from ELECTRO ADAPTER, INC.		DRAWN C.Fowler	DATE 5-18-05	 ELECTRO ADAPTER, INC. CHATSWORTH, CA. 91311-6189
UNLESS OTHERWISE SPECIFIED DIMENSIONS ARE IN INCHES		CHKD G. FISH	DATE 5/20/05	
TOLERANCES: ANGLES DECIMALS ± 2° .XX = ± .06 .XXX = ± .031		APVD	DATE	DRAWING TITLE ADAPTER, MOLDING
DO NOT SCALE DRAWING		5/20/05		SIZE A CAGE CODE 31461 DRAWING NUMBER 902-16540 REV. A
		RELEASED	DATE	SCALE: NONE 0\SALES\902\16540 SHEET 1 OF 1

UNCONTROLLED COPY

Example Part Number

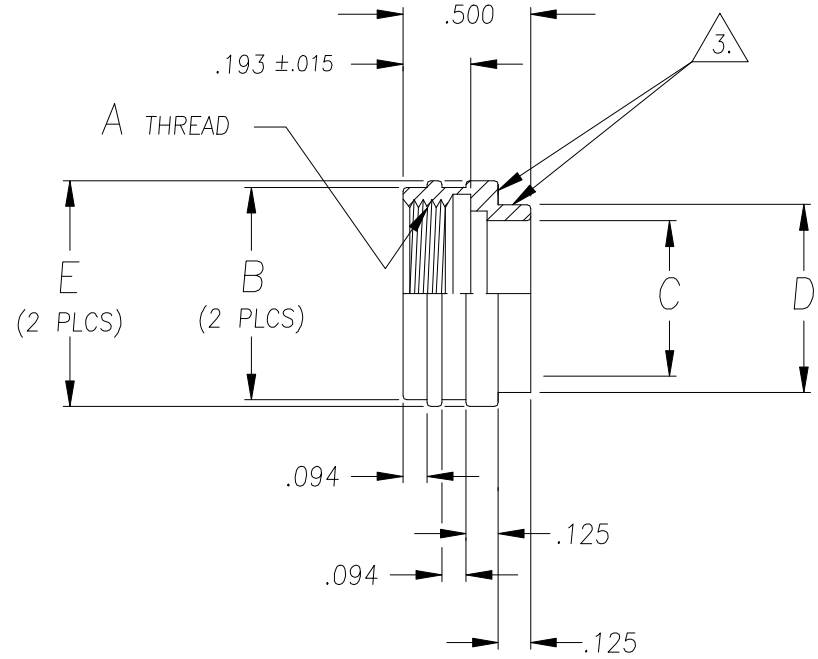
902-16541-16

BASIC PART NUMBER

CONNECTOR CODE

ORDER NUMBER	SHELL SIZE		A UNIFIED THD. CLASS 2B	ØB ±.010	ØC ±.015	ØD ±.015	ØE ±.010
	SER. II	SER. I					
0 8	8	9	.438-28	.562	.312	.438	.625
1 0	10	11	.562-24	.688	.438	.562	.750
1 2	12	13	.688-24	.812	.562	.688	.875
1 4	14	15	.812-20	.938	.688	.812	1.000
1 6	16	17	.938-20	1.062	.812	.938	1.125
1 8	18	19	1.062-18	1.188	.938	1.062	1.250
2 0	20	21	1.188-18	1.312	1.062	1.188	1.375
2 2	22	23	1.312-18	1.438	1.188	1.312	1.500
2 4	24	25	1.438-18	1.562	1.312	1.438	1.625

PART NUMBER			
902-16541			
REVISIONS			
LTR	ECO NUMBER	DRAWN	APPROVED
A	20966	C.F. 6-3-05	G.F. 6-3-05
B	20991	C.F. 07-22-05	G.F. 07-22-05




NOTES: UNLESS OTHERWISE SPECIFIED

1. ASSEMBLY IDENTIFICATION PER MIL-STD-1285.

2. MATERIAL: ALUMINUM ALLOY

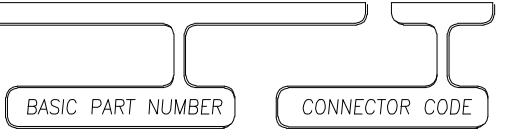
3. PLATING: CADMIUM, OLIVE DRAB OVER ELECTROLESS NICKEL, PER QQ-P-416 & MIL-C-26074. (SURFACES INDICATED TO BE NICKEL PLATED ONLY)

The information disclosed herein is the property of, and a proprietary item originated by ELECTRO ADAPTER, INC. who reserves all patent, proprietary design, use, sale, manufacturing and reproduction rights thereto; except for uses expressly granted to the United States Government and items which are vendor parts, disclosure shall not be made without written consent from ELECTRO ADAPTER, INC.		DRAWN C.Fowler	DATE 5-23-05	 ELECTRO ADAPTER, INC. CHATSWORTH, CA. 91311-6189
UNLESS OTHERWISE SPECIFIED DIMENSIONS ARE IN INCHES		CHKD G. FISH	DATE 5/23/05	
TOLERANCES: ANGLES DECIMALS ± 2° .XX = ± .06 .XXX = ± .031		APVD	DATE	DRAWING TITLE ADAPTER, MOLDING
DO NOT SCALE DRAWING		5/23/05		SIZE A CAGE CODE 31461 DRAWING NUMBER 902-16541 REV. B
		RELEASED	DATE	SCALE: NONE 0\SALES\902\16541 SHEET 1 OF 1

UNCONTROLLED COPY

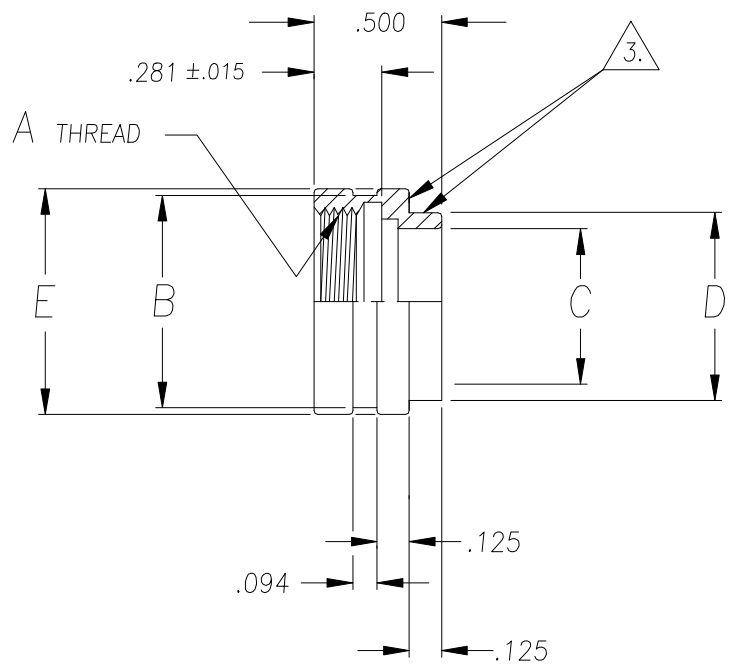
Example Part Number

902-16554-16



PART NUMBER			
902-16554			
REVISIONS			
LTR	ECO NUMBER	DRAWN	APPROVED
A	20991	C.F. 07-22-05	G.F. 07-22-05

ORDER NUMBER	SHELL SIZE		A UNIFIED THD. CLASS 2B	ØB ±.010	ØC ±.015	ØD ±.015	ØE ±.010
	4	5					
0 3	3	-	.562-24	.688	.438	.562	.750
0 8	-	8,8S	.500-20	.625	.375	.500	.688
1 0	-	10,10S,10SL	.625-24	.750	.500	.625	.812
1 2	7	12,12S	.750-20	.875	.625	.750	.938
1 4	12	14,14S	.875-20	1.000	.750	.875	1.062
1 6	19	16,16S	1.000-20	1.125	.875	1.000	1.188
1 8	27	18	1.062-18	1.188	.938	1.062	1.250
2 0	37	20	1.188-18	1.312	1.062	1.188	1.375
2 2	-	22	1.312-18	1.438	1.188	1.312	1.500
2 4	-	24	1.438-18	1.562	1.312	1.438	1.625



- NOTES: UNLESS OTHERWISE SPECIFIED
- ASSEMBLY IDENTIFICATION PER MIL-STD-1285.
 - MATERIAL: ALUMINUM ALLOY
 - PLATING: CADMIUM, OLIVE DRAB OVER ELECTROLESS NICKEL, PER QQ-P-416 & MIL-C-26074. (SURFACES INDICATED TO BE NICKEL PLATED ONLY)
 - SHELL SIZE PER MIL-C-81703 (SERIES 3).
 - SHELL SIZE PER MIL-C-5015H (3400 SERIES) MIL-C-26482 (SERIES 2) MIL-C-83723 (SERIES I & II) & NAS1599.

The information disclosed herein is the property of, and a proprietary item originated by ELECTRO ADAPTER, INC. who reserves all patent, proprietary design, use, sale, manufacturing and reproduction rights thereto; except for uses expressly granted to the United States Government and items which are vendor parts, disclosure shall not be made without written consent from ELECTRO ADAPTER, INC. UNLESS OTHERWISE SPECIFIED DIMENSIONS ARE IN INCHES TOLERANCES: ANGLES DECIMALS ± 2' .XX = ± .06 .XXX = ± .031 DO NOT SCALE DRAWING	DRAWN C.Fowler	DATE 5-23-05	ELECTRO ADAPTER, INC. CHATSWORTH, CA. 91311-6189
	CHKD G. FISH	DATE 5/23/05	
	APVD	DATE	
		5/23/05	
	RELEASED	DATE	
SIZE A	CAGE CODE 31461	DRAWING NUMBER 902-16554	REV. A
SCALE: NONE	0\SALES\902\16554		SHEET 1 OF 1

UNCONTROLLED COPY



STANDARD FINISHES

PLATING CODE	FINISH	SPECIFICATION	ACCESSORY MATERIAL	CORROSION RESISTANCE (HRS)	ROHS COMPLIANT
0 3	CADIUM PLATE, OLIVE DRAB	SAE AMS-QQ-P-416, TYPE II, CLASS 3	ALUMINUM	96	NO
1 0	PASSIVATE	SAE AMS-QQ-P-35, (AS85049 CODE S)	STAINLESS STEEL	1000	YES
1 2	ZINC NICKEL, BLACK	ASTM B841	ALUMINUM	500	YES
1 3	ZINC COBALT, OLIVE DRAB	ASTM B840-99	ALUMINUM	96	NO
1 4	ZINC COBALT, BLACK	ASTM B840-99	ALUMINUM	96	NO
2 1	IRIDITE, 14-2, GOLD	IRIDITE, NUMBER 14-2 PER MIL-DTL-5541 CL 3	ALUMINUM	96	NO
3 4	ANODIZE, BLACK	MIL-A-8625, TYPE II, CL 3 (AS85049 CODE A)	ALUMINUM	1000	YES
3 5	ANODIZE ,GREY	MIL-A-8625, TYPE II, CLASS 2	ALUMINUM	500	YES
4 4	ANODIZE, HARD, BLACK	MIL-A-8625, TYPE II, CLASS 2	ALUMINUM	500	YES
4 5	ANODIZE, HARD, GREY	MIL-A-8625, TYPE II, CLASS 2	ALUMINUM	1000	YES
4 8	ELECTROLESS NICKEL	AMS-2404F, CLASS 4, GRADE B	STAINLESS STEEL	48	NO
5 1	ELECTROLESS NICKEL	AMS-2404F, CLASS 4, GRADE B	ALUMINUM	48	NO
5 5	CADIUM PLATE, OLIVE DRAB, OVER ELECTROLESS NICKEL	SAE AMS-QQ-P-416, TYPE II, CLASS 3, OVER ELECTROLESS NICKEL, PER AMS-2404F (AS85049 CODE W)	ALUMINUM	1000	NO
5 6	ELECTROLESS NICKEL	AMS-2404F, CLASS 4, GRADE A	ALUMINUM	96	NO
5 6 R	ELECTROLESS NICKEL	AMS-2404F, CLASS 4, GRADE A	ALUMINUM	48	YES
5 7	ELECTROLESS NICKEL	AMS-2404F, CLASS 4, GRADE A (AS85049 CODE N)	ALUMINUM	96	NO
64	CADIUM PLATE, OLIVE DRAB, OVER ELECTROLESS NICKEL	SAE AMS-QQ-P-416, TYPE II, CLASS 3, OVER ELECTROLESS NICKEL, PER AMS-2404F (SELECTIVE PLATING REF AS85049 CODE P)	ALUMINUM	1000	NO
85	PASSIVATED	SAE AMS-QQ-P-35	316 SST	1000	YES
87	BEAD BLASTED	N/A	NI. ALUM. BRONZE	1000	YES

NOTES: UNLESS OTHERWISE SPECIFIED

1. CORROSION RESISTANCE IS SPECIFIED FOR SALT SPRAY IN ACCORDANCE WITH AS85049

CONSULT FACTORY FOR OTHER FINISHES

FINISHES ARE APPLICABLE TO THE CONNECTOR ACCESSORIES ONLY AND EXCLUDE FASTENERS AND OTHER HARDWARE

4. EMI/RFI ACCESSORIES ARE SUPPLIED WITH CONDUCTIVE FINISHES ONLY

5. ANODIZE NOT SUITABLE FOR EMI SHIELDING OR GROUNDING APPLICATIONS

6. ALL THE CONDUCTIVE FINISHES USED ON ALUMINUM CAN ALSO BE USED ON BRASS (CONSULT FACTORY)

CADMIUM/NICKEL INTERFACE SHALL BE COATED WITH POLYSULFIDE SEALANT (REF FIGURE 2 BELOW)

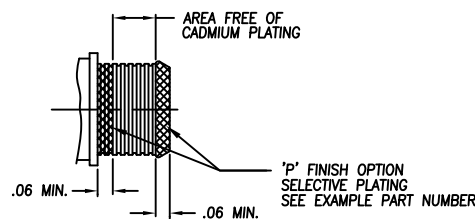


FIGURE 2



STANDARD MATERIALS

COMPONENT	MATERIAL	SPECIFICATION
MACHINED COMPONENTS	ALUMINUM STAINLESS STEEL (300 SERIES) BRASS NICKEL ALUMINUM BRONZE	ASTM B221, ASTM B211 (MFG OPTION) AMS-QQ-S-763, QQ-S-764 (MFG OPTION) QQ-B-626 ASTMB150 (AMS4640)
DIE CAST COMPONENTS	ALUMINUM	ASTM B 85
FASTENERS AND HARDWARE	STAINLESS STEEL (300 SERIES) STEEL BRASS	AMS-QQ-S-763 SAE20, QQ-S-634, QQ-S-637 QQ-B-626
ELASTOMERIC SEALS	SILICONE BUNA-N NEOPRENE	ZZ-R-765B, MIL-R-25988 AMS-3209 MIL-R-3065

NOTES: UNLESS OTHERWISE SPECIFIED

1. THE SPECIFIED MATERIALS ARE STANDARD FOR THE MAJORITY OF CONNECTOR ACCESSORIES
2. CONSULT FACTORY FOR OTHER MATERIALS
3. FOR DOCUMENTS LISTED WITHIN THIS CATALOG WITH OUT A TOLERANCE SHOWN SHALL HAVE TOLERANCES AS FALLOWED:
 - .X = $\pm .2$
 - .XX = $\pm .12$
 - .XXX = $\pm .062$
 - X° = $\pm 10^\circ$