

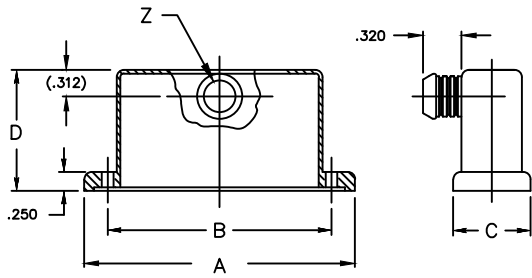


**ELECTRO ADAPTER INC.**  
 CHATSWORTH, CALIFORNIA, USA 91311  
 PHONE (818) 998-1198  
 FAX (818) 709-5773

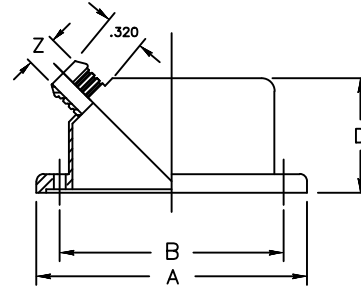
**SECTION 3 - RECTANGULAR ADAPTER  
 EMI / RFI , BAND TERMINATION ,  
 STRAIGHT , 45° , 90° SIDE , 90° FRONT  
 MIL - DTL - 24308 , D-SUB**

**901-813**

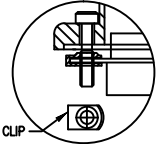
SHEET 1 OF 1



**STYLE F**

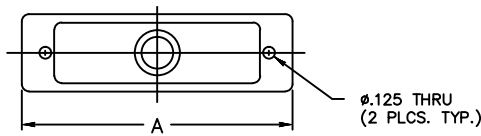


**STYLE A**

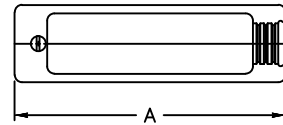


STAINLESS STEEL CLIP

SEE EXAMPLE PART NUMBER  
 'K' OPTION SOCKET SCREW  
 AND RETAINING CLIPS

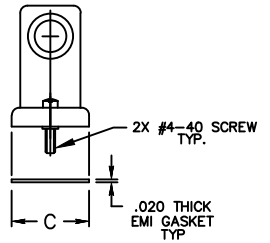
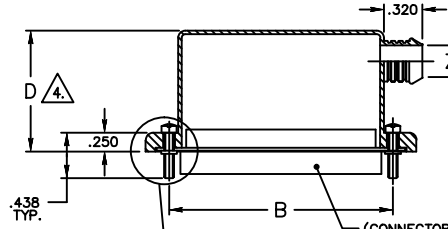
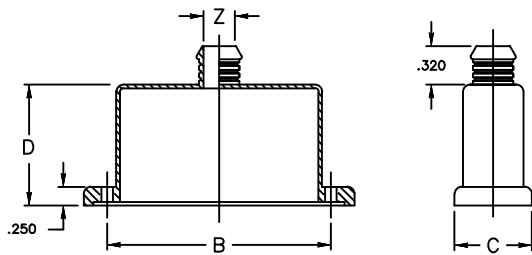


**STYLE S**



**STYLE R**

SHOWN WITH SCREWS



NYLON WASHER  $\Delta$   
 SEE PART NUMBER

*Example Part Number*

**901-813S1504156\***

BASIC ADAPTER NO.				ADAPTER STYLE		JACKSCREW TYPE	
901				S		F	
813				1		H	
S				5		J	
150				4		K	
415				6		LESS WASHERS	
6				*		OMIT IF JACKSCREWS & WASHERS NOT REQUIRED	
CONNECTION SHELL SIZE				ENTRY CODE		HEIGHT CODE	
SHELL SIZE	A ±.030	B ±.005	C ±.030	ENTRY CODE	ϕZ ±.005	HEIGHT CODE	D ±.03
9	1.366	.984	.640	0 1	.160	BLANK	.785 $\Delta$
15	1.694	1.312	.640	0 2	.190	0	1.000
25	2.241	1.852	.640	0 3	.220	1	1.25
37	2.882	2.500	.640	0 4	.260	2	1.50
50	2.778	2.406	.750	0 5	.275	3	1.75
104	2.882	2.500	.812	0 6	.285	4	2.00
				0 7	.350		
				0 8	.490		
						PLATING CODE NUMBER	
						CODE 56 - ELECTROLESS NICKEL, PER SAE AMS-C-26074, WITH IRIDITE CONVERSION.	
						FOR ADDITIONAL FINISH, SEE CATALOG TABLE 4	

NOTES: UNLESS OTHERWISE SPECIFIED.

- ASSEMBLY IDENTIFICATION PER MIL-STD-1285.
- MATERIAL: BACKSHELL: ALUMINUM ALLOY.  
GASKET: EMI: ALUMINUM WEAVE-NEOPRENE IMPREGNATED.

$\Delta$  SCREWS ARE CAPTIVATED WITH NYLON WASHERS.

$\Delta$  MIN HEIGHT CODE IS '0' FOR 90° BACKSHELLS

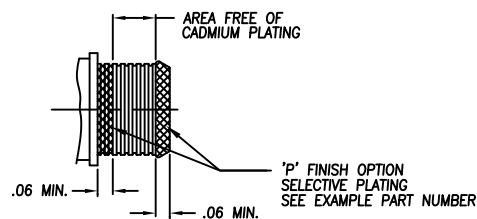


**STANDARD FINISHES**

PLATING CODE	FINISH	SPECIFICATION	ACCESSORY MATERIAL	CORROSION RESISTANCE (HRS)	ROHS COMPLIANT
0 3	CADIUM PLATE, OLIVE DRAB	SAE AMS-QQ-P-416, TYPE II, CLASS 3	ALUMINUM	96	NO
1 0	PASSIVATE	SAE AMS-QQ-P-35, (AS85049 CODE S)	STAINLESS STEEL	1000	YES
1 2	ZINC NICKEL, BLACK	ASTM B841	ALUMINUM	500	YES
1 3	ZINC COBALT, OLIVE DRAB	ASTM B840-99	ALUMINUM	96	NO
1 4	ZINC COBALT, BLACK	ASTM B840-99	ALUMINUM	96	NO
2 1	IRIDITE, 14-2, GOLD	IRIDITE, NUMBER 14-2 PER MIL-DTL-5541 CL 3	ALUMINUM	96	NO
3 4	ANODIZE, BLACK	MIL-A-8625, TYPE II, CL 3 (AS85049 CODE A)	ALUMINUM	1000	YES
3 5	ANODIZE ,GREY	MIL-A-8625, TYPE II, CLASS 2	ALUMINUM	500	YES
4 4	ANODIZE, HARD, BLACK	MIL-A-8625, TYPE II, CLASS 2	ALUMINUM	500	YES
4 5	ANODIZE, HARD, GREY	MIL-A-8625, TYPE II, CLASS 2	ALUMINUM	1000	YES
4 8	ELECTROLESS NICKEL	AMS-2404F, CLASS 4, GRADE B	STAINLESS STEEL	48	NO
5 1	ELECTROLESS NICKEL	AMS-2404F, CLASS 4, GRADE B	ALUMINUM	48	NO
5 5	CADIUM PLATE, OLIVE DRAB, OVER ELECTROLESS NICKEL	SAE AMS-QQ-P-416, TYPE II, CLASS 3, OVER ELECTROLESS NICKEL, PER AMS-2404F (AS85049 CODE W)	ALUMINUM	1000	NO
5 6	ELECTROLESS NICKEL	AMS-2404F, CLASS 4, GRADE A	ALUMINUM	96	NO
5 6 R	ELECTROLESS NICKEL	AMS-2404F, CLASS 4, GRADE A	ALUMINUM	48	YES
5 7	ELECTROLESS NICKEL	AMS-2404F, CLASS 4, GRADE A (AS85049 CODE N)	ALUMINUM	96	NO
64	CADIUM PLATE, OLIVE DRAB, OVER ELECTROLESS NICKEL	SAE AMS-QQ-P-416, TYPE II, CLASS 3, OVER  ELECTROLESS NICKEL, PER AMS-2404F (SELECTIVE PLATING REF AS85049 CODE P)	ALUMINUM	1000	NO
85	PASSIVATED	SAE AMS-QQ-P-35	316 SST	1000	YES
87	BEAD BLASTED	N/A	NI. ALUM. BRONZE	1000	YES

NOTES: UNLESS OTHERWISE SPECIFIED

- CORROSION RESISTANCE IS SPECIFIED FOR SALT SPRAY IN ACCORDANCE WITH AS85049
- CONSULT FACTORY FOR OTHER FINISHES
- FINISHES ARE APPLICABLE TO THE CONNECTOR ACCESSORIES ONLY AND EXCLUDE FASTENERS AND OTHER HARDWARE
- EMI/RFI ACCESSORIES ARE SUPPLIED WITH CONDUCTIVE FINISHES ONLY
- ANODIZE NOT SUITABLE FOR EMI SHIELDING OR GROUNDING APPLICATIONS
- ALL THE CONDUCTIVE FINISHES USED ON ALUMINUM CAN ALSO BE USED ON BRASS (CONSULT FACTORY)
- CADMIUM/NICKEL INTERFACE SHALL BE COATED WITH POLYSULFIDE SEALANT (REF FIGURE 2 BELOW)



**FIGURE 2**



**STANDARD MATERIALS**

COMPONENT	MATERIAL	SPECIFICATION
MACHINED COMPONENTS	ALUMINUM STAINLESS STEEL (300 SERIES) BRASS NICKEL ALUMINUM BRONZE	ASTM B221, ASTM B211 (MFG OPTION) AMS-QQ-S-763, QQ-S-764 (MFG OPTION) QQ-B-626 ASTMB150 (AMS4640)
DIE CAST COMPONENTS	ALUMINUM	ASTM B 85
FASTENERS AND HARDWARE	STAINLESS STEEL (300 SERIES) STEEL BRASS	AMS-QQ-S-763 SAE20, QQ-S-634, QQ-S-637 QQ-B-626
ELASTOMERIC SEALS	SILICONE BUNA-N NEOPRENE	ZZ-R-765B, MIL-R-25988 AMS-3209 MIL-R-3065

NOTES: UNLESS OTHERWISE SPECIFIED

1. THE SPECIFIED MATERIALS ARE STANDARD FOR THE MAJORITY OF CONNECTOR ACCESSORIES
2. CONSULT FACTORY FOR OTHER MATERIALS
3. FOR DOCUMENTS LISTED WITHIN THIS CATALOG WITH OUT A TOLERANCE SHOWN SHALL HAVE TOLERANCES AS FALLOWED:
  - .X = ±.2
  - .XX = ±.12
  - .XXX = ± .062
  - X° = ±10°