



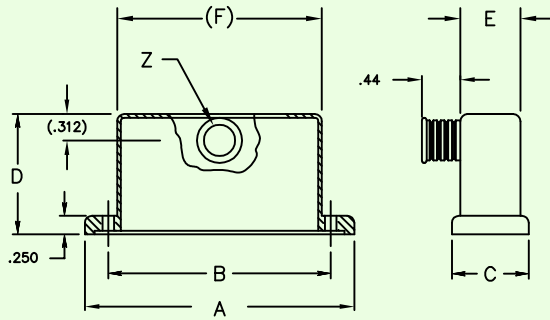
**ELECTRO ADAPTER INC.**  
 CHATSWORTH, CALIFORNIA, USA 91311  
 PHONE (818) 998-1198  
 FAX (818) 709-5773

**BACKSHELL, EMI/RFI  
 FOR MIL-DTL-24308, D-SUB,  
 PANELMOUNT, BAND TERMINATION,  
 STRAIGHT ENTRY, 45°, 90°**

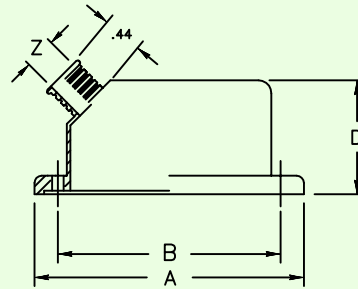
**901-719**

SHEET 1 OF 1

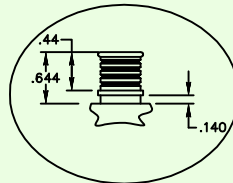
Add'l Finish Options [TABLE 4 Click Here](#)



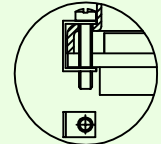
**STYLE F**



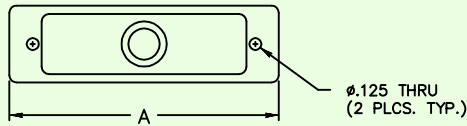
**STYLE A**



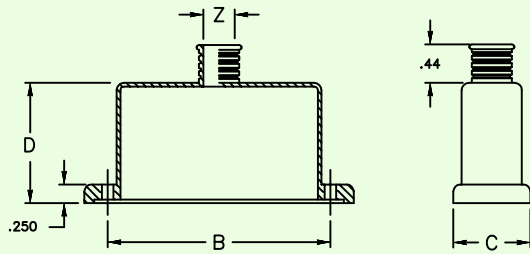
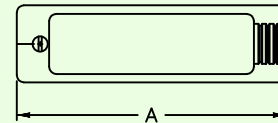
"B" BOOT GROOVE  
 SEE PART NUMBER



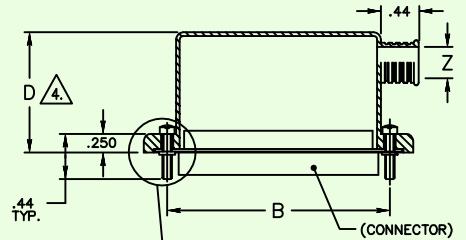
"C" RETENTION CLIP  
 SEE PART NUMBER



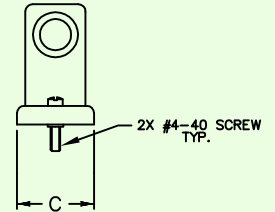
Ø.125 THRU  
 (2 PLCS. TYP.)



**STYLE S**



**STYLE R**  
 SHOWN WITH SCREWS



2X #4-40 SCREW  
 TYP.

NYLON WASHER <sup>3</sup>  
 SEE PART NUMBER

*Example Part Number*

901-719S1504156\*CB

BASIC ADAPTER NO.

ADAPTER STYLE

S = STRAIGHT ADAPTER  
 R = 90° SIDE ADAPTER  
 A = 45° ADAPTER  
 F = 90° FRONT ADAPTER

CONNECTOR SHELL SIZE

| SHELL SIZE | A ±.030 | B ±.005 | C ±.030 | E REF | F REF |
|------------|---------|---------|---------|-------|-------|
| 9          | 1.366   | .984    | .640    | .51   | .77   |
| 15         | 1.694   | 1.312   | .640    | .51   | 1.09  |
| 25         | 2.241   | 1.852   | .640    | .51   | 1.64  |
| 37         | 2.882   | 2.500   | .640    | .51   | 2.28  |
| 50         | 2.778   | 2.406   | .750    | .55   | 2.19  |
| 104        | 2.882   | 2.500   | .812    | .69   | 2.31  |

ENTRY CODE

| ENTRY CODE | ØZ ±.005 |
|------------|----------|
| 0 1        | .160     |
| 0 2        | .190     |
| 0 3        | .220     |
| 0 4        | .260     |
| 0 5        | .275     |
| 0 6        | .285     |
| 0 7        | .350     |
| 0 8        | .490     |

HEIGHT CODE

| HEIGHT CODE | D ±.03 |
|-------------|--------|
| BLANK       | 1.181  |
| 0           | .787   |
| 1           | .984   |
| 2           | .590   |

ADD 'B' FOR ADAPTER SUPPLIED WITH BOOTGROOVE, OMIT IF NOT REQUIRED.

ADD 'C' FOR ADAPTER SUPPLIED WITH SCREW RETENTION CLIPS, OMIT IF NOT REQUIRED.

JACKSCREW TYPE  
 F = 2 MALE FILLISTER  
 H = 2 MALE HEX SOCKET  
 J = 2 FEMALE JACKPOST  
 OMIT IF JACKSCREWS & WASHERS NOT REQUIRED <sup>3</sup>

PLATING CODE NUMBER

CODE 02 - CADMIUM, GOLD PER SAE QQ-P-416 TYPE 3  
 CODE 13 - ZINC COBALT, OLIVE DRAB, PER ASTM B840-99 OVER ELECTROLESS NICKEL  
 CODE 55 - CADMIUM, OLIVE DRAB, PER SAE QQ-P-416, TYPE 3, CL 3, OVER ELECTROLESS NICKEL  
 CODE 56 - ELECTROLESS NICKEL PER SAE AMS-2404F, WITH IRIDIUM CONVERSION.  
 FOR ADDITIONAL FINISH, SEE CATALOG TABLE 4

NOTES: UNLESS OTHERWISE SPECIFIED.

- ASSEMBLY IDENTIFICATION PER MIL-STD-1285.
- MATERIAL: BACKSHELL: ALUMINUM ALLOY.

<sup>3</sup> SCREWS ARE CAPTIVATED WITH NYLON WASHERS.

<sup>4</sup> FOR STYLE-R ADAPTERS, OMIT HEIGHT CODE.  
 STYLE-R ADAPTERS ARE ONLY AVAILABLE IN "BLANK" HEIGHT CODE.