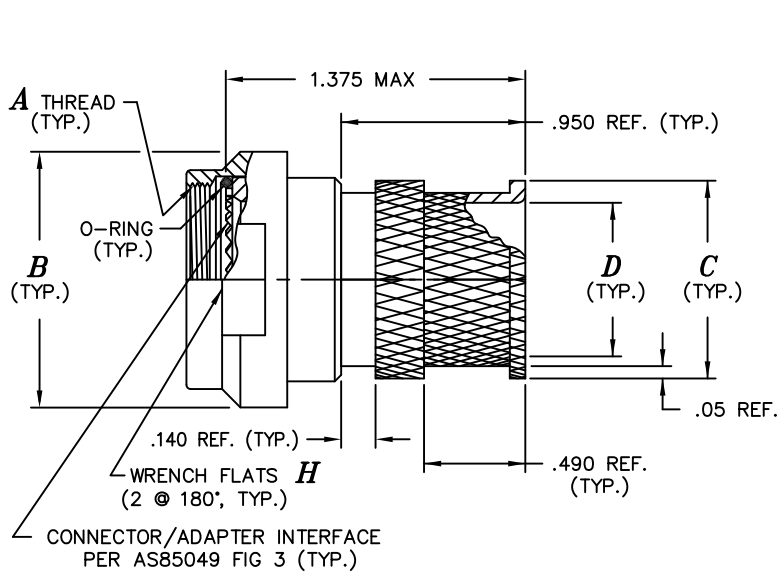




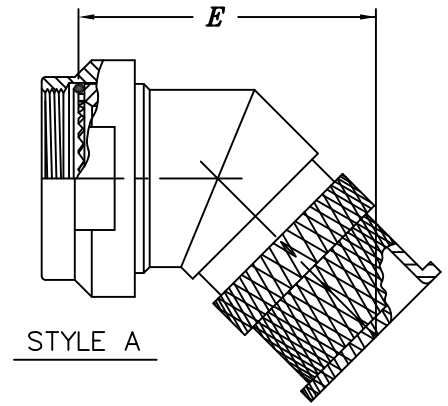
**ELECTRO ADAPTER, INC.**  
 CHATSWORTH, CALIFORNIA, USA 91311  
 PHONE: (818) 998-1198  
 FAX: (818) 709-5773  
 www.electro-adapter.com

**CONSTANT FORCE SPRING  
 ADAPTER FOR  
 MIL-DTL-38999, SERIES III & IV**

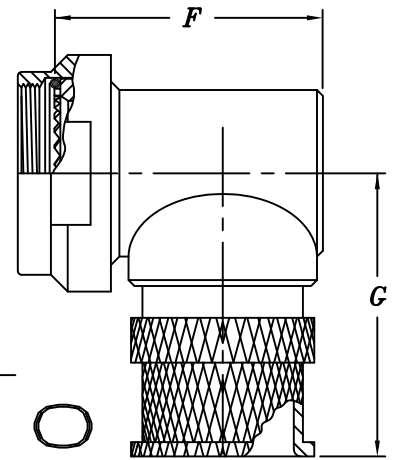
**SPECIFICATION CONTROL DRAWING  
 901-423**



**STYLE S**



**STYLE A**



**STYLE R**

*Example Part Number*

**901 - 423S210**

**BASIC ADAPTER NUMBER**

**ADAPTER STYLE**

- STYLE S = STRAIGHT ADAPTER
- STYLE A = 45° ADAPTER
- STYLE R = 90° ADAPTER

**PLATING CODE NUMBER**

- 10 = PASSIVATE, PER SAE-AMS-QQ-P-35
- 12 = BLACK, ZINC NICKEL, TYPE II, CLASS 2
- 55 = CADMIUM, OLIVE DRAB, PER SAE AMS-QQ-P-416, TYPE II, CLASS 3,  
OVER ELECTROLESS NICKEL PER AMS-C-26074, CLASS 3 OR 4, GRADE B
- 56 = ELECTROLESS NICKEL PER SAE AMS-2404F, CLASS 3 OR 4, GRADE A.

FOR ADDITIONAL FINISH OPTIONS, SEE CATALOG TABLE 4.

**NOTES:**

1. ASSEMBLY IDENT. PER MIL-STD-1285.
2. MATERIAL: COMPONENTS - ALUMINUM ALLOY, 300 SERIES STAINLESS STEEL. O-RING - SILICONE
3. SEE DRAWING NUMBER 901-436 FOR SHIELD TERMINATION SPRING. (TACOM DWG#12347630)
4. QUALIFIED TO TACOM DRAWINGS NO'S  
 45° ~ 12387118  
 45° ~ 12387117  
 90° ~ 12387119

**ADAPTER DATA**

ORDER NUMBER	SHELL SIZE		A METRIC THD. CLASS 6H	B MAX. DIA.	C MAX. DIA.	D REF. DIA.	E REF.	F REF.	G REF.	H ACROSS FLATS
	COM'L.	MIL.								
1	9	A	M12 x 1.0	.78	.53	.25	1.57	.81	1.344	.625
2	11	B	M15 x 1.0	.91	.61	.37	1.59	.93	1.406	.750
3	13	C	M18 x 1.0	1.03	.78	.50	1.63	1.06	1.469	.875
4	15	D	M22 x 1.0	1.16	.84	.62	1.67	1.18	1.531	1.000
5	17	E	M25 x 1.0	1.28	.96	.75	1.71	1.31	1.594	1.125
6	19	F	M28 x 1.0	1.41	1.04	.81	1.77	1.37	1.656	1.250
7	21	G	M31 x 1.0	1.53	1.22	1.00	1.81	1.50	1.719	1.375
8	23	H	M34 x 1.0	1.66	1.35	1.12	1.84	1.62	1.781	1.500
9	25	J	M37 x 1.0	1.78	1.48	1.25	1.90	1.68	1.844	1.625

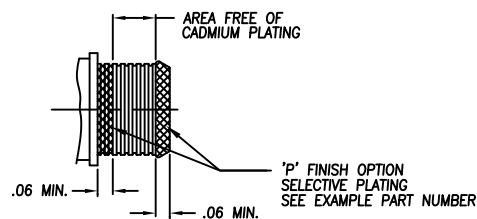


**STANDARD FINISHES**

PLATING CODE	FINISH	SPECIFICATION	ACCESSORY MATERIAL	CORROSION RESISTANCE (HRS)	ROHS COMPLIANT
0 3	CADIUM PLATE, OLIVE DRAB	SAE AMS-QQ-P-416, TYPE II, CLASS 3	ALUMINUM	96	NO
1 0	PASSIVATE	SAE AMS-QQ-P-35, (AS85049 CODE S)	STAINLESS STEEL	1000	YES
1 2	ZINC NICKEL, BLACK	ASTM B841	ALUMINUM	500	YES
1 3	ZINC COBALT, OLIVE DRAB	ASTM B840-99	ALUMINUM	96	NO
1 4	ZINC COBALT, BLACK	ASTM B840-99	ALUMINUM	96	NO
2 1	IRIDITE, 14-2, GOLD	IRIDITE, NUMBER 14-2 PER MIL-DTL-5541 CL 3	ALUMINUM	96	NO
3 4	ANODIZE, BLACK	MIL-A-8625, TYPE II, CL 3 (AS85049 CODE A)	ALUMINUM	1000	YES
3 5	ANODIZE ,GREY	MIL-A-8625, TYPE II, CLASS 2	ALUMINUM	500	YES
4 4	ANODIZE, HARD, BLACK	MIL-A-8625, TYPE II, CLASS 2	ALUMINUM	500	YES
4 5	ANODIZE, HARD, GREY	MIL-A-8625, TYPE II, CLASS 2	ALUMINUM	1000	YES
4 8	ELECTROLESS NICKEL	AMS-2404F, CLASS 4, GRADE B	STAINLESS STEEL	48	NO
5 1	ELECTROLESS NICKEL	AMS-2404F, CLASS 4, GRADE B	ALUMINUM	48	NO
5 5	CADIUM PLATE, OLIVE DRAB, OVER ELECTROLESS NICKEL	SAE AMS-QQ-P-416, TYPE II, CLASS 3, OVER ELECTROLESS NICKEL, PER AMS-2404F (AS85049 CODE W)	ALUMINUM	1000	NO
5 6	ELECTROLESS NICKEL	AMS-2404F, CLASS 4, GRADE A	ALUMINUM	96	NO
5 6 R	ELECTROLESS NICKEL	AMS-2404F, CLASS 4, GRADE A	ALUMINUM	48	YES
5 7	ELECTROLESS NICKEL	AMS-2404F, CLASS 4, GRADE A (AS85049 CODE N)	ALUMINUM	96	NO
64	CADIUM PLATE, OLIVE DRAB, OVER ELECTROLESS NICKEL	SAE AMS-QQ-P-416, TYPE II, CLASS 3, OVER  ELECTROLESS NICKEL, PER AMS-2404F (SELECTIVE PLATING REF AS85049 CODE P)	ALUMINUM	1000	NO
85	PASSIVATED	SAE AMS-QQ-P-35	316 SST	1000	YES
87	BEAD BLASTED	N/A	NI. ALUM. BRONZE	1000	YES

NOTES: UNLESS OTHERWISE SPECIFIED

- CORROSION RESISTANCE IS SPECIFIED FOR SALT SPRAY IN ACCORDANCE WITH AS85049
- CONSULT FACTORY FOR OTHER FINISHES
- FINISHES ARE APPLICABLE TO THE CONNECTOR ACCESSORIES ONLY AND EXCLUDE FASTENERS AND OTHER HARDWARE
- EMI/RFI ACCESSORIES ARE SUPPLIED WITH CONDUCTIVE FINISHES ONLY
- ANODIZE NOT SUITABLE FOR EMI SHIELDING OR GROUNDING APPLICATIONS
- ALL THE CONDUCTIVE FINISHES USED ON ALUMINUM CAN ALSO BE USED ON BRASS (CONSULT FACTORY)
- CADMIUM/NICKEL INTERFACE SHALL BE COATED WITH POLYSULFIDE SEALANT (REF FIGURE 2 BELOW)



**FIGURE 2**



**STANDARD MATERIALS**

COMPONENT	MATERIAL	SPECIFICATION
MACHINED COMPONENTS	ALUMINUM STAINLESS STEEL (300 SERIES) BRASS NICKEL ALUMINUM BRONZE	ASTM B221, ASTM B211 (MFG OPTION) AMS-QQ-S-763, QQ-S-764 (MFG OPTION) QQ-B-626 ASTMB150 (AMS4640)
DIE CAST COMPONENTS	ALUMINUM	ASTM B 85
FASTENERS AND HARDWARE	STAINLESS STEEL (300 SERIES) STEEL BRASS	AMS-QQ-S-763 SAE20, QQ-S-634, QQ-S-637 QQ-B-626
ELASTOMERIC SEALS	SILICONE BUNA-N NEOPRENE	ZZ-R-765B, MIL-R-25988 AMS-3209 MIL-R-3065

NOTES: UNLESS OTHERWISE SPECIFIED

1. THE SPECIFIED MATERIALS ARE STANDARD FOR THE MAJORITY OF CONNECTOR ACCESSORIES
2. CONSULT FACTORY FOR OTHER MATERIALS
3. FOR DOCUMENTS LISTED WITHIN THIS CATALOG WITH OUT A TOLERANCE SHOWN SHALL HAVE TOLERANCES AS FALLOWED:
  - .X =  $\pm .2$
  - .XX =  $\pm .12$
  - .XXX =  $\pm .062$
  - X° =  $\pm 10^\circ$