

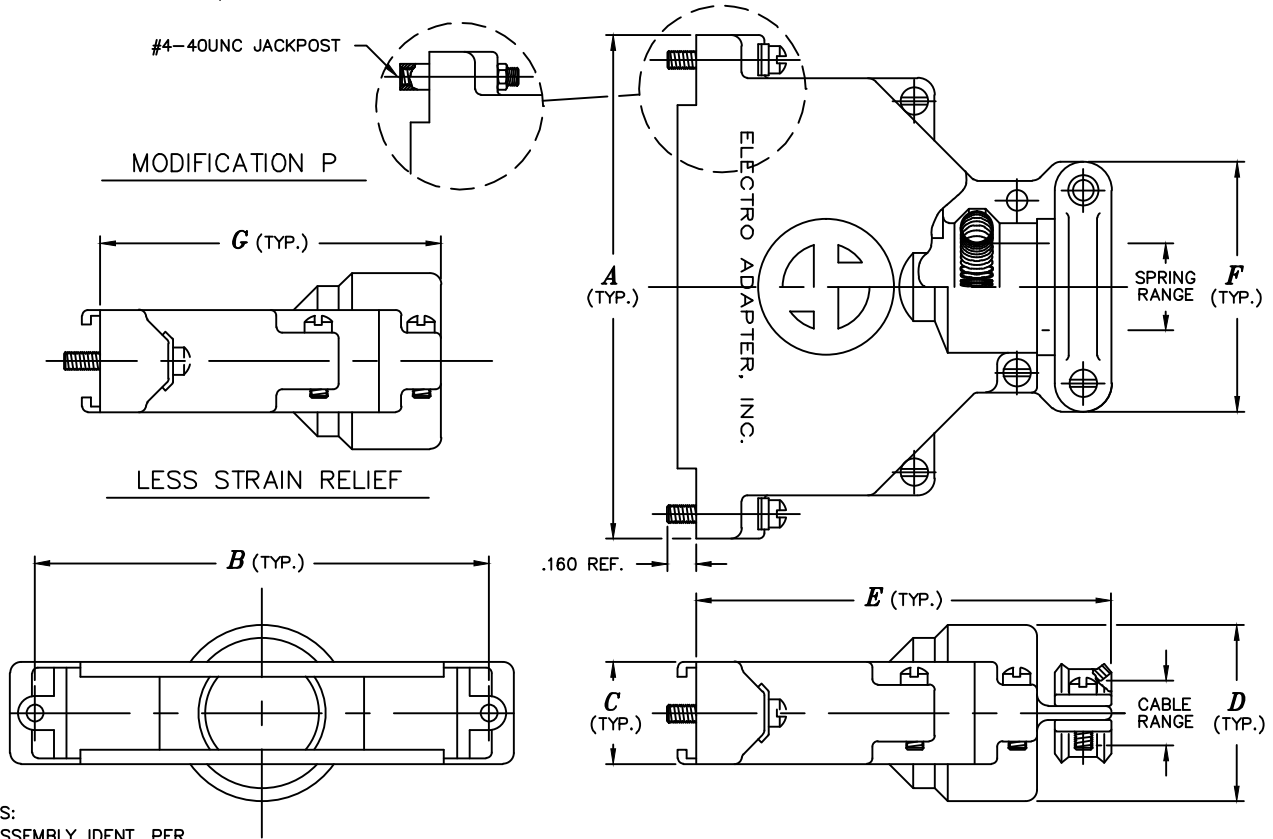


ELECTRO ADAPTER, INC.
 CHATSWORTH, CALIFORNIA, USA 91311
 PHONE: (818) 998-1198
 FAX: (818) 709-5773
 WEB SITE: www.electro-adapter.com

SPLIT BACKSHELL, EMI
 FOR MIL-DTL-24308, D-SUB
 SPRING TERMINATION WITH OPTIONAL
 STRAIN RELIEF, STRAIGHT ENTRY

SPECIFICATION CONTROL DRAWING

900653



NOTES:

- ASSEMBLY IDENT. PER MIL-STD-1285.
 - MATERIAL: COMPONENTS - ALUMINUM ALLOY
- ⚠ FOR MULTIPLE MOD. CODES USE SEQUENCE SHOWN
- ⚠ JACKSCREW PLUS CLIP INCLUDED WITH STANDARD PART.

Example Part Number

900653-06RS02P

BASIC ADAPTER NUMBER

TABLE I - PLUG MOUNT DATA

| ORDER NUMBER | SHELL SIZE | A ±.031 | B ±.010 | C ±.031 | D ±.031 | E ±.094 | F ±.031 | G ±.094 | CABLE RANGE | | SPRING RANGE | |
|--------------|------------|---------|---------|---------|---------|---------|---------|---------|-------------|------|--------------|------|
| | | | | | | | | | MAX. | MIN. | MAX. | MIN. |
| 0 1 | 9 | 1.257 | .984 | .562 | .594 | 1.750 | .750 | 1.438 | .265 | .203 | .250 | .188 |
| 0 2 | 15 | 1.627 | 1.312 | .562 | .719 | 1.750 | 1.000 | 1.438 | .265 | .203 | .250 | .188 |
| 0 3 | 15 | 1.627 | 1.312 | .562 | .719 | 1.750 | 1.000 | 1.438 | .454 | .383 | .375 | .312 |
| 0 4 | 25 | 2.160 | 1.852 | .562 | .702 | 2.350 | 1.000 | 1.938 | .265 | .203 | .250 | .188 |
| 0 5 | 25 | 2.160 | 1.852 | .562 | .875 | 2.250 | 1.125 | 1.938 | .460 | .400 | .438 | .375 |
| 0 6 | 25 | 2.160 | 1.852 | .562 | .875 | 2.250 | 1.125 | 1.938 | .560 | .500 | .500 | .438 |
| 0 7 | 37 | 2.773 | 2.500 | .562 | .969 | 2.312 | 1.375 | 1.938 | .460 | .400 | .438 | .375 |
| 0 8 | 37 | 2.773 | 2.500 | .562 | .969 | 2.312 | 1.375 | 1.938 | .625 | .562 | .562 | .500 |
| 0 9 | 37 | 2.773 | 2.500 | .562 | .969 | 2.312 | 1.375 | 1.938 | .688 | .625 | .625 | .562 |
| 1 0 | 50 | 2.720 | 2.406 | .760 | 1.000 | 2.350 | 1.375 | 1.938 | .460 | .400 | .438 | .375 |
| 1 1 | 50 | 2.720 | 2.406 | .760 | 1.000 | 2.350 | 1.375 | 1.938 | .560 | .500 | .500 | .438 |
| 1 2 | 50 | 2.720 | 2.406 | .760 | 1.000 | 2.350 | 1.375 | 1.938 | .625 | .562 | .562 | .500 |
| 1 3 | 50 | 2.720 | 2.406 | .760 | 1.000 | 2.350 | 1.375 | 1.938 | .688 | .625 | .625 | .562 |
| 1 5 | 25 | 2.160 | 1.852 | .562 | .969 | 2.312 | 1.375 | 1.938 | .688 | .625 | .625 | .562 |
| 1 6 | 25 | 2.160 | 1.852 | .562 | .719 | 2.250 | 1.000 | 1.938 | .445 | .383 | .375 | .312 |
| 1 7 | 25 | 2.160 | 1.852 | .562 | .719 | 2.250 | 1.000 | 1.938 | .375 | .312 | .312 | .250 |
| 1 8 | 25 | 2.160 | 1.852 | .562 | .969 | 2.312 | 1.375 | 1.938 | .625 | .562 | .500 | .438 |
| 1 9 | 37 | 2.773 | 2.500 | .562 | .969 | 2.312 | 1.375 | 1.938 | .625 | .562 | .500 | .438 |
| 2 0 | 15 | 1.627 | 1.312 | .562 | .719 | 1.750 | 1.000 | 1.438 | .281 | .203 | .250 | .188 |

MODIFICATION CODE ⚠

- J = JACKSCREW LESS CLIP ⚠
- L = LESS JACKSCREW AND CLIP
- P = JACKPOST AND NUT
- C = HELICAL CONDUIT THREAD
- OMIT IF NOT REQUIRED

PLATING CODE NUMBER

- 02 = CADMIUM, GOLD, PER SAE AMS-QQ-P-416 TYPE II, CLASS 3
- 21 = IRIDITE, GOLD, NUMBER 14-2 PER MIL-C-5541, CLASS 3
- 51 = ELECTROLESS NICKEL PER AMS-C-26074, CLASS 3 OR 4, GRADE B
- FOR ADDITIONAL FINISH OPTIONS, SEE CATALOG TABLE 4.

STRAIN RELIEF

- S = SADDLE BAR STRAIN RELIEF
- OMIT IF NOT REQUIRED

SHIELD TERMINATION OPTION

- R = INCLUDES SHIELD TERMINATOR
- N = WITHOUT SHIELD TERMINATOR



STANDARD FINISHES

| PLATING CODE | FINISH | SPECIFICATION | ACCESSORY MATERIAL | CORROSION RESISTANCE (HRS) | ROHS COMPLIANT |
|--------------|---|--|--------------------|----------------------------|----------------|
| 0 3 | CADIUM PLATE, OLIVE DRAB | SAE AMS-QQ-P-416, TYPE II, CLASS 3 | ALUMINUM | 96 | NO |
| 1 0 | PASSIVATE | SAE AMS-QQ-P-35, (AS85049 CODE S) | STAINLESS STEEL | 1000 | YES |
| 1 2 | ZINC NICKEL, BLACK | ASTM B841 | ALUMINUM | 500 | YES |
| 1 3 | ZINC COBALT, OLIVE DRAB | ASTM B840-99 | ALUMINUM | 96 | NO |
| 1 4 | ZINC COBALT, BLACK | ASTM B840-99 | ALUMINUM | 96 | NO |
| 2 1 | IRIDITE, 14-2, GOLD | IRIDITE, NUMBER 14-2 PER MIL-DTL-5541 CL 3 | ALUMINUM | 96 | NO |
| 3 4 | ANODIZE, BLACK | MIL-A-8625, TYPE II, CL 3 (AS85049 CODE A) | ALUMINUM | 1000 | YES |
| 3 5 | ANODIZE ,GREY | MIL-A-8625, TYPE II, CLASS 2 | ALUMINUM | 500 | YES |
| 4 4 | ANODIZE, HARD, BLACK | MIL-A-8625, TYPE II, CLASS 2 | ALUMINUM | 500 | YES |
| 4 5 | ANODIZE, HARD, GREY | MIL-A-8625, TYPE II, CLASS 2 | ALUMINUM | 1000 | YES |
| 4 8 | ELECTROLESS NICKEL | AMS-2404F, CLASS 4, GRADE B | STAINLESS STEEL | 48 | NO |
| 5 1 | ELECTROLESS NICKEL | AMS-2404F, CLASS 4, GRADE B | ALUMINUM | 48 | NO |
| 5 5 | CADIUM PLATE, OLIVE DRAB, OVER ELECTROLESS NICKEL | SAE AMS-QQ-P-416, TYPE II, CLASS 3, OVER ELECTROLESS NICKEL, PER AMS-2404F (AS85049 CODE W) | ALUMINUM | 1000 | NO |
| 5 6 | ELECTROLESS NICKEL | AMS-2404F, CLASS 4, GRADE A | ALUMINUM | 96 | NO |
| 5 6 R | ELECTROLESS NICKEL | AMS-2404F, CLASS 4, GRADE A | ALUMINUM | 48 | YES |
| 5 7 | ELECTROLESS NICKEL | AMS-2404F, CLASS 4, GRADE A (AS85049 CODE N) | ALUMINUM | 96 | NO |
| 64 | CADIUM PLATE, OLIVE DRAB, OVER ELECTROLESS NICKEL | SAE AMS-QQ-P-416, TYPE II, CLASS 3, OVER ELECTROLESS NICKEL, PER AMS-2404F (SELECTIVE PLATING REF AS85049 CODE P) | ALUMINUM | 1000 | NO |
| 85 | PASSIVATED | SAE AMS-QQ-P-35 | 316 SST | 1000 | YES |
| 87 | BEAD BLASTED | N/A | NI. ALUM. BRONZE | 1000 | YES |

NOTES: UNLESS OTHERWISE SPECIFIED

- CORROSION RESISTANCE IS SPECIFIED FOR SALT SPRAY IN ACCORDANCE WITH AS85049
- CONSULT FACTORY FOR OTHER FINISHES
- FINISHES ARE APPLICABLE TO THE CONNECTOR ACCESSORIES ONLY AND EXCLUDE FASTENERS AND OTHER HARDWARE
- EMI/RFI ACCESSORIES ARE SUPPLIED WITH CONDUCTIVE FINISHES ONLY
- ANODIZE NOT SUITABLE FOR EMI SHIELDING OR GROUNDING APPLICATIONS
- ALL THE CONDUCTIVE FINISHES USED ON ALUMINUM CAN ALSO BE USED ON BRASS (CONSULT FACTORY)
- CADMIUM/NICKEL INTERFACE SHALL BE COATED WITH POLYSULFIDE SEALANT (REF FIGURE 2 BELOW)

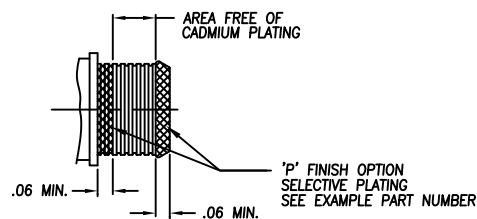


FIGURE 2



STANDARD MATERIALS

| COMPONENT | MATERIAL | SPECIFICATION |
|------------------------|---|--|
| MACHINED COMPONENTS | ALUMINUM STAINLESS STEEL (300 SERIES) BRASS NICKEL ALUMINUM BRONZE | ASTM B221, ASTM B211 (MFG OPTION) AMS-QQ-S-763, QQ-S-764 (MFG OPTION) QQ-B-626 ASTMB150 (AMS4640) |
| DIE CAST COMPONENTS | ALUMINUM | ASTM B 85 |
| FASTENERS AND HARDWARE | STAINLESS STEEL (300 SERIES) STEEL BRASS | AMS-QQ-S-763 SAE20, QQ-S-634, QQ-S-637 QQ-B-626 |
| ELASTOMERIC SEALS | SILICONE BUNA-N NEOPRENE | ZZ-R-765B, MIL-R-25988 AMS-3209 MIL-R-3065 |

NOTES: UNLESS OTHERWISE SPECIFIED

1. THE SPECIFIED MATERIALS ARE STANDARD FOR THE MAJORITY OF CONNECTOR ACCESSORIES
2. CONSULT FACTORY FOR OTHER MATERIALS
3. FOR DOCUMENTS LISTED WITHIN THIS CATALOG WITH OUT A TOLERANCE SHOWN SHALL HAVE TOLERANCES AS FALLOWED:
 - .X = ±.2
 - .XX = ±.12
 - .XXX = ± .062
 - X° = ±10°