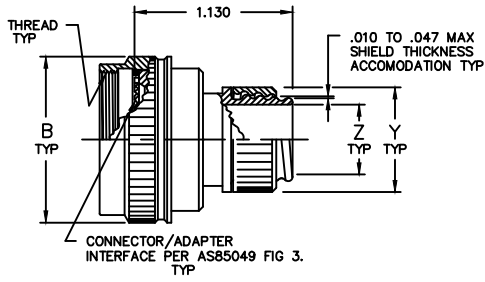




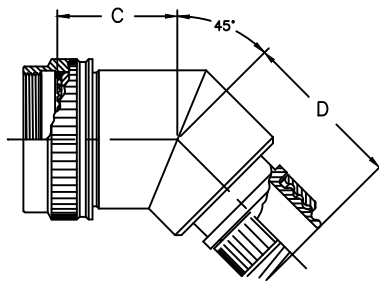
ELECTRO ADAPTER INC.
 CHATSWORTH, CALIFORNIA, USA 91311
 PHONE (818) 998-1198
 FAX (818) 709-5773

**SECTION 1 - MECHANICAL
 ADAPTER, SHRINK BOOT,
 LAMP BASE, SHIELD TERMINATION FOR
 MIL-DTL-38999, SERIES III & IV**

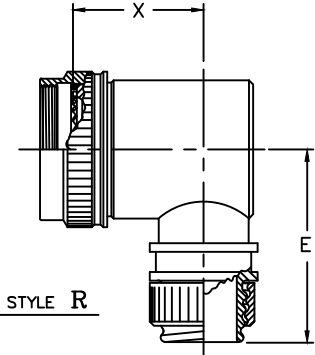
4840
 SHEET 1 OF 1



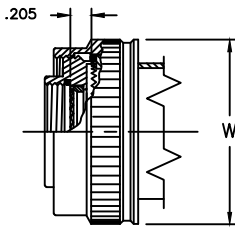
STYLE S



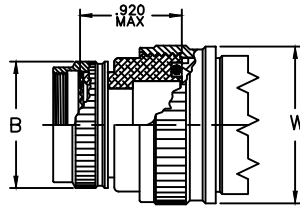
STYLE A



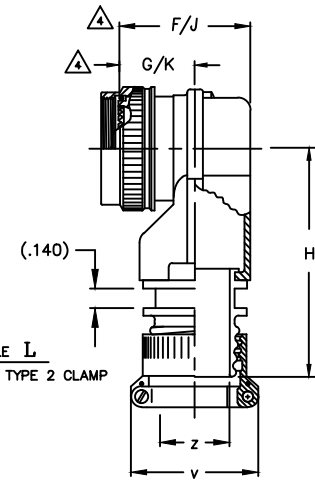
STYLE R



FOR STYLE L
 CONFIG FOR 2 PIECE



CONFIG FOR 2 PIECE



STYLE L
 SHOWN WITH TYPE 2 CLAMP

Example Part Number

4840R22141-55S

ADAPTER SERIES
 STRAIGHT, 45° & 90° SHRINK BOOT, SHIELD TERMINATING

CONNECTOR CODE
 MIL-DTL-38999, SER III & IV
 CLASS C, F, K & W
 MIL-38999/20, 24, 25, 40, 44, 46 & 47

ADAPTER STYLE
 S = STRAIGHT ADAPTER
 A = 45° ADAPTER
 R = 90° ADAPTER
 L = LO PRO SPLIT 90°

ADAPTER STYLE
 1 = NUT
 2 = CLAMP

ADD "S" FOR SELF LOCKING COUPLING. OMIT IF NOT REQUIRED

PLATING CODE NUMBER

03 = CADMIUM, OLIVE DRAB, PER SAE AMS-QQ-P-416, CLASS 3

55 = CADMIUM, OLIVE DRAB, PER SAE AMS-QQ-P-416, CLASS 3, OVER ELECTROLESS NICKEL PER AMS-C-26074, GRADE B

56 = ALUMINUM, ELECTROLESS NICKEL PER AMS-C-26074, CLASS 3 OR 4, GRADE A.

FOR ADDITIONAL FINISH OPTION, SEE CATALOG TABLE 4

ORDER NUMBER	SHELL SIZE		CONNECTOR ORDER NUMBER											
	COM'L	MIL	A	ØB	C	D	E	F	G	J	K	H	MAX. ENTRY SIZE	MAX. ENTRY STYLE L
			METRIC THD CLASS 6H	MAX	MAX	MAX	±.094	MAX	REF.	MAX	REF.	MAX.		
0 8	9	A	M12 X 1.0	.719	.528	1.055	1.125	.704	.344	.968	.715	1.595	04	06
1 0	11	B	M15 X 1.0	.844	.591	1.081	1.188	.755	.300	1.019	.715	1.855	06	06
1 2	13	C	M18 X 1.0	.969	.653	1.106	1.250	.761	.300	1.127	.740	2.045	08	08
1 4	15	D	M22 X 1.0	1.094	.716	1.132	1.312	.861	.310	1.245	.763	2.145	10	08
1 6	17	E	M25 X 1.0	1.219	.809	1.158	1.375	.991	.450	1.485	1.003	2.245	12	08
1 8	19	F	M28 X 1.0	1.344	.997	1.184	1.438	1.202	.636	1.466	.975	2.245	14	10
2 0	21	G	M31 X 1.0	1.469	.997	1.223	1.500	1.211	.570	1.540	.900	2.245	14	14
2 2	23	H	M34 X 1.0	1.594	1.091	1.249	1.562	1.181	.535	1.445	.878	2.245	16	14
2 4	25	J	M37 X 1.0	1.719	1.091	1.262	1.625	1.181	.535	1.535	.878	2.245	20	14

ORDER NUMBER	CABLE ENTRY ORDER NUMBER				
	ØZ	ØY	X	V	ØW
	±.020	±.030	±.094	±.030	MAX
0 2	.125	.406	.418	.781	N/A
0 4	.250	.531	.481	.781	N/A
0 6	.375	.625	.543	.906	.734
0 8	.500	.750	.606	.969	.858
1 0	.625	.875	.668	1.156	1.112
1 2	.750	1.000	.731	1.270	1.345
1 4	.875	1.125	.794	1.406	1.345
1 6	1.000	1.250	.856	1.531	1.594
1 8	1.125	1.375	.918	1.656	1.594
2 0	1.250	1.500	.980	1.781	1.969

NOTES: UNLESS OTHERWISE SPECIFIED

- ASSEMBLY IDENTIFICATION PER MIL-STD-1285.
- MATERIAL : ADAPTER / COMPONENTS - ALUMINUM ALLOY / 300 SERIES SST

O'RING - SILICONE

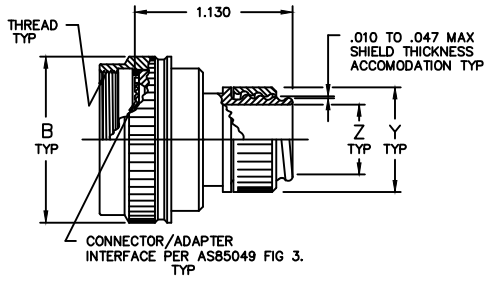
- TWO PIECE ADAPTER WILL BE SUPPLIED WITH ENTRY EXCEEDS MAX ENTRY SIZE
- DIMENSIONS J & K APPLY TO SELF LOCKING OPTION ONLY



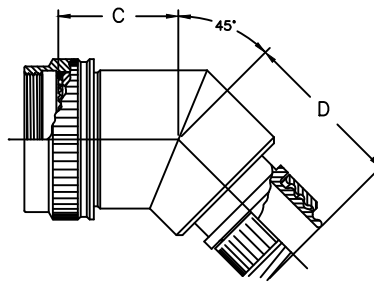
ELECTRO ADAPTER INC.
 CHATSWORTH, CALIFORNIA, USA 91311
 PHONE (818) 998-1198
 FAX (818) 709-5773

**SECTION 1 - MECHANICAL
 ADAPTER, SHRINK BOOT,
 LAMP BASE, SHIELD TERMINATION FOR
 MIL-DTL-38999, SERIES I & II**

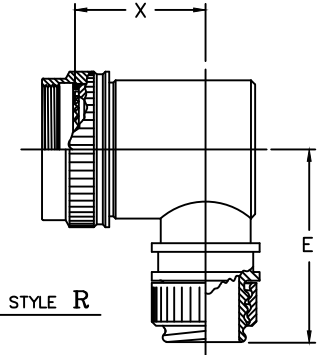
4841
 SHEET 1 OF 1



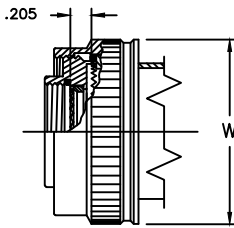
STYLE S



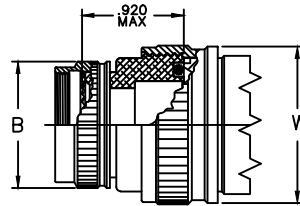
STYLE A



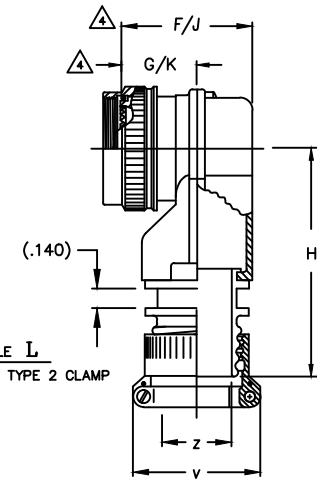
STYLE R



FOR STYLE L Δ
 CONFIG FOR 2 PIECE



CONFIG FOR 2 PIECE Δ



STYLE L
 SHOWN WITH TYPE 2 CLAMP

Example Part Number

4841R22141-55S

ADAPTER SERIES
 STRAIGHT, 45° & 90° SHRINK
 BOOT, SHIELD TERMINATING

CONNECTOR CODE
 MIL-DTL-38999, SER I & II
 CLASS E, P, & T
 MS24766, 67, 72, 73, 74,
 79, 80, 81, 84, 97,
 MS27652, 53 & 56

ADAPTER STYLE
 S = STRAIGHT ADAPTER
 A = 45° ADAPTER
 R = 90° ADAPTER
 L = LO PRO SPLIT 90°

ADAPTER STYLE
 1 = NUT
 2 = CLAMP

ADD "S" FOR SELF LOCKING COUPLING. OMIT IF NOT REQUIRED Δ

PLATING CODE NUMBER

03 = CADMIUM, OLIVE DRAB, PER SAE AMS-QQ-P-416, CLASS 3
 55 = CADMIUM, OLIVE DRAB, PER SAE AMS-QQ-P-416, CLASS 3
 OVER ELECTROLESS NICKEL PER AMS-C-26074, GRADE B

56 = ALUMINUM, ELECTROLESS NICKEL PER AMS-C-26074,
 CLASS 3 OR 4, GRADE A.
 FOR ADDITIONAL FINISH OPTION, SEE CATALOG TABLE 4

CONNECTOR ORDER NUMBER

ORDER NUMBER	SHELL SIZE		A UNIFIED THD CLASS 2B	ØB MAX	C MAX	D MAX	E ±.094	F MAX	G REF.	J Δ MAX	K Δ REF.	H MAX.	MAX. ENTRY SIZE Δ	MAX. ENTRY STYLE L
	SER I	SER II												
0 8	9	8	.438-28	.598	.528	1.055	1.125	.704	.344	.968	.715	1.595	04	06
1 0	11	10	.562-24	.723	.591	1.081	1.188	.755	.300	1.019	.715	1.855	06	06
1 2	13	12	.688-24	.848	.653	1.106	1.250	.761	.300	1.127	.740	2.045	08	08
1 4	15	14	.812-20	.973	.716	1.132	1.312	.861	.310	1.245	.763	2.145	10	08
1 6	17	16	.938-20	1.098	.809	1.158	1.375	.991	.450	1.485	1.003	2.245	12	08
1 8	19	18	1.062-18	1.224	.997	1.184	1.438	1.202	.636	1.466	.975	2.245	14	10
2 0	21	20	1.188-18	1.348	.997	1.223	1.500	1.211	.570	1.540	.900	2.245	14	14
2 2	23	22	1.312-18	1.473	1.091	1.249	1.562	1.181	.535	1.445	.878	2.245	16	14
2 4	25	24	1.438-18	1.598	1.091	1.262	1.625	1.181	.535	1.535	.878	2.245	20	14

CABLE ENTRY ORDER NUMBER

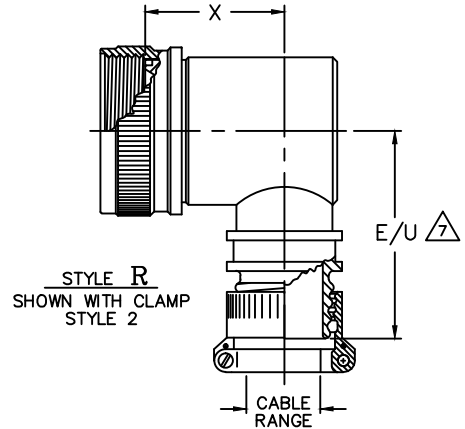
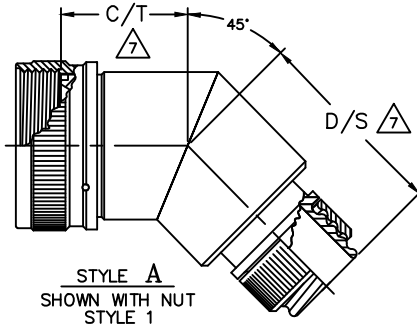
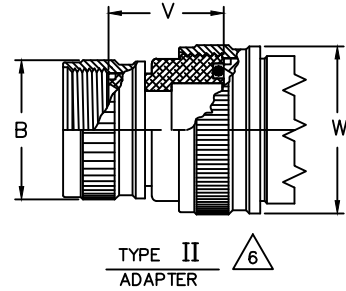
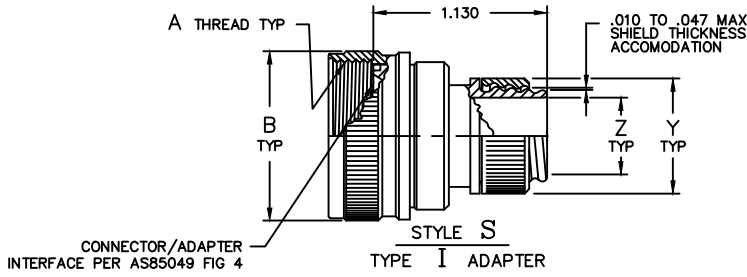
ORDER NUMBER	ØZ ±.020	ØY ±.030	X ±.094	V ±.030	ØW MAX
0 2	.125	.406	.418	.781	N/A
0 4	.250	.531	.481	.781	N/A
0 6	.375	.625	.543	.906	.734
0 8	.500	.750	.606	.969	.858
1 0	.625	.875	.668	1.156	1.112
1 2	.750	1.000	.731	1.270	1.345
1 4	.875	1.125	.794	1.406	1.345
1 6	1.000	1.250	.856	1.531	1.594
1 8	1.125	1.375	.918	1.656	1.594
2 0	1.250	1.500	.980	1.781	1.969

NOTES: UNLESS OTHERWISE SPECIFIED

- ASSEMBLY IDENTIFICATION PER MIL-STD-1285.
- MATERIAL : ADAPTER / COMPONENTS - ALUMINUM ALLOY / 300 SERIES SST

O'RING - SILICONE

- Δ TWO PIECE ADAPTER WILL BE SUPPLIED WITH ENTRY EXCEEDS MAX ENTRY SIZE
- Δ DIMENSIONS J & K APPLY TO SELF LOCKING OPTION ONLY



Example Part Number
4854R22141-55



ADAPTER SERIES
 STRAIGHT, 45° & 90° SHRINK
 BOOT, SHIELD TERMINATING

CONNECTOR CODE
 MIL-C-5015, 3400 SER,
 MIL-C-26482, SER II
 MIL-C-81703, SER III,
 MIL-C-83723, SER III
 NAS 1599

ADAPTER STYLE
 S = STRAIGHT ADAPTER
 A = 45° ADAPTER
 R = 90° ADAPTER

NUT STYLE
 1 = NUT
 2 = CLAMP

PLATING CODE NUMBER
 CODE 03 - CADMIUM, OLIVE DRAB, PER QQ-P-416, TYPE II, CL 3
 CODE 51 - ELECTROLESS NICKEL PER MIL-C-26074
 CLASS 3 OR 4, GRADE B
 CODE 55 - CADMIUM, OLIVE DRAB, PER QQ-P-416, CL 3
 OVER ELECTROLESS NICKEL PER MIL-C-26074, GRADE B
 FOR ADDITIONAL FINISH OPTION, SEE CATALOG TABLE 4

CONNECTOR ORDER NUMBER								
ORDER NUMBER	SHELL SIZE		A UNIFIED THD CLASS 2B	~oB MAX	C MAX	D MAX	E ±.094	AVAILABLE ENTRY SIZE $\Delta 6$
	$\Delta 3$	$\Delta 4$						
0 3	3		.562-24	.669	$\Delta 3$	$\Delta 3$	1.125	02 & 04
0 8		8&8S	.500-20	.617	.544	1.630	1.125	02 & 04
1 0		10,10S&10SL	.625-24	.734	.607	1.690	1.156	02 THRU 06
1 2	7	12&12S	.750-20	.858	.669	1.750	1.219	04 THRU 08
1 4	12	14&14S	.875-20	.984	.732	1.840	1.281	04 THRU 08
1 6	19	16&16S	1.000-20	1.112	.825	1.950	1.344	06 THRU 10
1 8	27	18	1.062-18	1.218	1.013	2.140	1.375	06 THRU 12
2 0	37	20	1.188-18	1.345	1.013	2.140	1.438	08 THRU 14
2 2		22	1.312-18	1.468	1.107	2.290	1.500	08 THRU 16
2 4		24	1.438-18	1.593	1.107	2.290	1.562	10 THRU 18
2 8		28	1.750-18	1.969	1.107	2.340	1.719	10 THRU 20
3 2		32	2.000-18	2.219	1.294	2.440	1.844	10 THRU 20
3 6		36	2.250-16	2.469	1.325	2.530	1.969	10 THRU 20
4 0		40	2.500-16	2.719	$\Delta 3$	$\Delta 3$	2.094	10 THRU 20
4 4		44	2.750-16	2.969	$\Delta 3$	$\Delta 3$	2.219	10 THRU 20
4 8		48	3.000-16	3.219	$\Delta 3$	$\Delta 3$	2.344	10 THRU 20
6 1	61		1.500-18	1.653	$\Delta 3$	$\Delta 3$	1.594	10 THRU 18

CABLE ENTRY ORDER NUMBER												
ORDER NUMBER	±.010	±.031	MAX	~oY MAX	X	~oW MAX	V	U ±.094	T MAX	S MAX	CABLE RANGE	
											MAX	MIN
0 2	.125	.406	.562	N/A	.750	N/A	N/A	N/A	N/A	N/A	N/A	N/A
0 4	.250	.531	.562	N/A	.750	N/A	N/A	N/A	N/A	.250	.188	
0 6	.375	.625	.625	.734	.750	1.156	.607	1.690	.375	.291		
0 8	.500	.750	.688	.858	.750	1.219	.669	1.750	.500	.375		
1 0	.625	.875	.750	1.112	.750	1.344	.825	1.950	.625	.501		
1 2	.750	1.000	.812	1.218	.750	1.375	1.013	2.140	.750	.562		
1 4	.875	1.125	.875	1.345	.750	1.438	1.013	2.140	N/A	N/A		
1 6	1.000	1.250	.938	1.468	.750	1.500	1.107	2.290	1.000	.688		
1 8	1.125	1.375	1.000	1.593	.750	1.562	1.107	2.290	1.125	.750		
2 0	1.250	1.500	1.062	1.969	.906	1.719	1.107	2.340	1.250	.812		
2 2	1.375	1.625	1.125	1.969	.906	1.719	1.107	2.340	N/A	N/A		

- $\Delta 8$ ADD LETTER "R" TO END OF P/N FOR CRUSH COUPLING OPTION.
 - $\Delta 7$ DIMENSIONS "U", "T" & "S" APPLIES TO TYPE II ADAPTER.
 - $\Delta 6$ TYPE II ADAPTER SUPPLIED WHEN ENTRY SIZE EXCEEDS AVAILABLE ENTRY.
 - $\Delta 5$ CONSULT FACTORY FOR DIMENSIONS INDICATED.
 - $\Delta 4$ SHELL SIZES PER MIL-C-5015, 3400 SERIES, MIL-C-26482, SER II MIL-C-83723, SERIES I & III, & NAS1599.
 - $\Delta 3$ SHELL SIZES PER MIL-C-81703.
2. MATERIAL: ADAPTER COPONENTS ~ ALUMINUM ALLOY.
 1. ASSEMBLY IDENTIFICATION PER MIL-STD-130.

NOTES: UNLESS OTHERWISE SPECIFIED.



STANDARD FINISHES

PLATING CODE	FINISH	SPECIFICATION	ACCESSORY MATERIAL	CORROSION RESISTANCE (HRS)	ROHS COMPLIANT
0 3	CADIUM PLATE, OLIVE DRAB	SAE AMS-QQ-P-416, TYPE II, CLASS 3	ALUMINUM	96	NO
1 0	PASSIVATE	SAE AMS-QQ-P-35, (AS85049 CODE S)	STAINLESS STEEL	1000	YES
1 2	ZINC NICKEL, BLACK	ASTM B841	ALUMINUM	500	YES
1 3	ZINC COBALT, OLIVE DRAB	ASTM B840-99	ALUMINUM	96	NO
1 4	ZINC COBALT, BLACK	ASTM B840-99	ALUMINUM	96	NO
2 1	IRIDITE, 14-2, GOLD	IRIDITE, NUMBER 14-2 PER MIL-DTL-5541 CL 3	ALUMINUM	96	NO
3 4	ANODIZE, BLACK	MIL-A-8625, TYPE II, CL 3 (AS85049 CODE A)	ALUMINUM	1000	YES
3 5	ANODIZE ,GREY	MIL-A-8625, TYPE II, CLASS 2	ALUMINUM	500	YES
4 4	ANODIZE, HARD, BLACK	MIL-A-8625, TYPE II, CLASS 2	ALUMINUM	500	YES
4 5	ANODIZE, HARD, GREY	MIL-A-8625, TYPE II, CLASS 2	ALUMINUM	1000	YES
4 8	ELECTROLESS NICKEL	AMS-2404F, CLASS 4, GRADE B	STAINLESS STEEL	48	NO
5 1	ELECTROLESS NICKEL	AMS-2404F, CLASS 4, GRADE B	ALUMINUM	48	NO
5 5	CADIUM PLATE, OLIVE DRAB, OVER ELECTROLESS NICKEL	SAE AMS-QQ-P-416, TYPE II, CLASS 3, OVER ELECTROLESS NICKEL, PER AMS-2404F (AS85049 CODE W)	ALUMINUM	1000	NO
5 6	ELECTROLESS NICKEL	AMS-2404F, CLASS 4, GRADE A	ALUMINUM	96	NO
5 6 R	ELECTROLESS NICKEL	AMS-2404F, CLASS 4, GRADE A	ALUMINUM	48	YES
5 7	ELECTROLESS NICKEL	AMS-2404F, CLASS 4, GRADE A (AS85049 CODE N)	ALUMINUM	96	NO
64	CADIUM PLATE, OLIVE DRAB, OVER ELECTROLESS NICKEL	SAE AMS-QQ-P-416, TYPE II, CLASS 3, OVER ELECTROLESS NICKEL, PER AMS-2404F (SELECTIVE PLATING REF AS85049 CODE P)	ALUMINUM	1000	NO
85	PASSIVATED	SAE AMS-QQ-P-35	316 SST	1000	YES
87	BEAD BLASTED	N/A	NI. ALUM. BRONZE	1000	YES

NOTES: UNLESS OTHERWISE SPECIFIED

1. CORROSION RESISTANCE IS SPECIFIED FOR SALT SPRAY IN ACCORDANCE WITH AS85049

CONSULT FACTORY FOR OTHER FINISHES

FINISHES ARE APPLICABLE TO THE CONNECTOR ACCESSORIES ONLY AND EXCLUDE FASTENERS AND OTHER HARDWARE

4. EMI/RFI ACCESSORIES ARE SUPPLIED WITH CONDUCTIVE FINISHES ONLY

5. ANODIZE NOT SUITABLE FOR EMI SHIELDING OR GROUNDING APPLICATIONS

6. ALL THE CONDUCTIVE FINISHES USED ON ALUMINUM CAN ALSO BE USED ON BRASS (CONSULT FACTORY)

CADMIUM/NICKEL INTERFACE SHALL BE COATED WITH POLYSULFIDE SEALANT (REF FIGURE 2 BELOW)

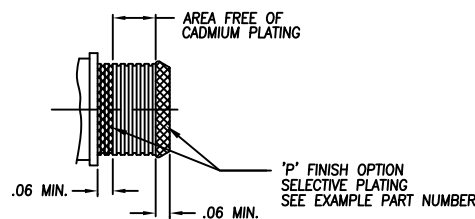


FIGURE 2



STANDARD MATERIALS

COMPONENT	MATERIAL	SPECIFICATION
MACHINED COMPONENTS	ALUMINUM STAINLESS STEEL (300 SERIES) BRASS NICKEL ALUMINUM BRONZE	ASTM B221, ASTM B211 (MFG OPTION) AMS-QQ-S-763, QQ-S-764 (MFG OPTION) QQ-B-626 ASTMB150 (AMS4640)
DIE CAST COMPONENTS	ALUMINUM	ASTM B 85
FASTENERS AND HARDWARE	STAINLESS STEEL (300 SERIES) STEEL BRASS	AMS-QQ-S-763 SAE20, QQ-S-634, QQ-S-637 QQ-B-626
ELASTOMERIC SEALS	SILICONE BUNA-N NEOPRENE	ZZ-R-765B, MIL-R-25988 AMS-3209 MIL-R-3065

NOTES: UNLESS OTHERWISE SPECIFIED

1. THE SPECIFIED MATERIALS ARE STANDARD FOR THE MAJORITY OF CONNECTOR ACCESSORIES
2. CONSULT FACTORY FOR OTHER MATERIALS
3. FOR DOCUMENTS LISTED WITHIN THIS CATALOG WITH OUT A TOLERANCE SHOWN SHALL HAVE TOLERANCES AS FALLOWED:
 - .X = $\pm .2$
 - .XX = $\pm .12$
 - .XXX = $\pm .062$
 - X° = $\pm 10^\circ$